



GREYSTONE

ENERGY SYSTEMS INC

HIGH ACCURACY LOW PRESSURE TRANSMITTER HALP3 Series

The HALP3 series is used to measure positive, negative or differential pressure. The piezoresistive sensor is ideal for monitoring the pressure of air or other clean inert gas. Typical HVAC applications include monitoring of filter differential pressure or VAV applications. An integrated static pressure probe provides ease of installation for duct mounting. Several accessories are available.

SPECIFICATION:

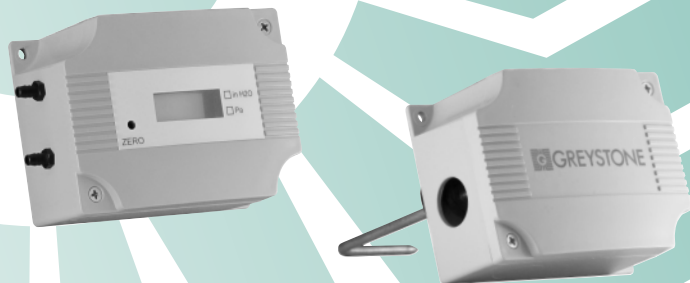
Accuracy	±0.5% F.S.O.
Measurement Type	Differential (two port), Static, Velocity, & Total Pressure
Response Time	250 ms
Stability	< ±0.5% F.S.O. per year
Thermal Effects.....	< ±3% over compensated range
Compensated Range	0 - 50° C (32 - 122°F)
Proof Pressure	40" W.C. (100" for 10" & 20" Models)
Burst Pressure	60" W.C. (200" for 10" & 20" Models)
Operating Conditions.....	0 - 70°C (32 - 158°F), 10 - 90 %RH, non-condensing
Power Supply.....	20 - 28 Vac/dc (non-isolated half-wave rectified)
Supply Current	< 4 mA
Input Voltage Effect	Negligible over operating range
Protection Circuitry.....	Reverse voltage protected and output limited
Output Signal.....	4-20 mA (2-wire), 0-5 or 0-10 Vdc (3-wire), switch selectable
Output Drive Capabilities.....	Current: 400 ohms max @ 24 vdc Voltage: 10K ohms min
Zero Adjustments.....	Pushbutton auto-zero
Wiring Connections.....	Screw terminal block (14 to 22 AWG)
Pressure Connection	Barbed ports for 5 mm (0.170" ID) flexible tubing
Conduit Connection.....	½" NPT conduit or cable gland
Optional Display	3½ digit LCD, 0.4" digit height
Enclosures	ABS, plenum rated
Weight	159 grams (5.6 oz)

TYPICAL INSTALLATION:

For complete installation and wiring details, please refer to the product installation instructions.

The HALP3 mounts on any surface using the two holes provided on the base of the unit. Make sure there is enough space around the unit to connect the pressure tubing without kinking and avoid locations where severe vibrations or excessive moisture are present.

The unit may be mounted in any position but typically is installed on a vertical surface with pressure ports on the right and the cable entrance on the left. If the unit has the integrated static pressure probe, drill a hole in the duct and insert so the probe point is facing into the airflow. The enclosure has a standard opening for a 1/2" conduit and may be installed with either conduit and a conduit coupler or a cable gland type fitting.



PART NUMBER SELECTED

PRODUCT SELECTION INFORMATION:

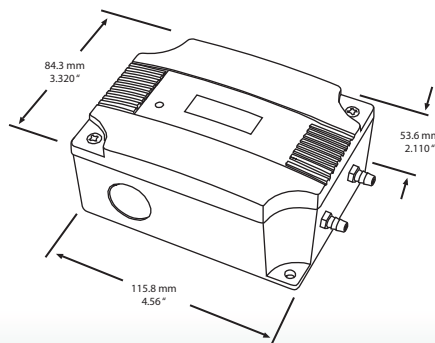
MODEL	Product Description
HALP3	High Accuracy Low Pressure Transmitter

CODE	Options
A	Standard
B	LCD Display

CODE	Range
00	±1", ±2", ±4", 0-1", 0-2", 0-4" W.C.
01	±3", ±5", ±8", 0-3", 0-5", 0-8" W.C.
02	±6", ±10", ±12", 0-6", 0-10", 0-12" W.C.
03	±10", ±15", ±20", 0-10", 0-15", 0-20" W.C.
04	±250, ±500, ±1000, 0-250, 0-500, 0-1000 Pa
05	±500, ±1000, ±2000, 0-500, 0-1000, 0-2000 Pa

CODE	Options
S	Integrated Static Pressure Probe

Greystone Energy Systems, Inc. reserves the right to make design modifications without prior notice.

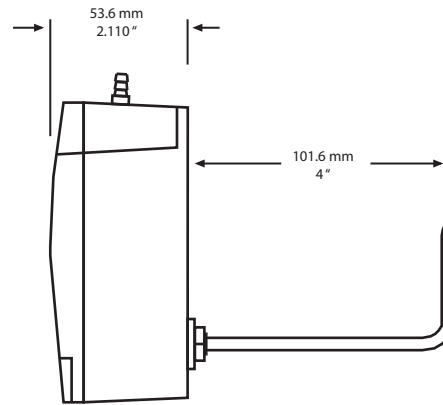
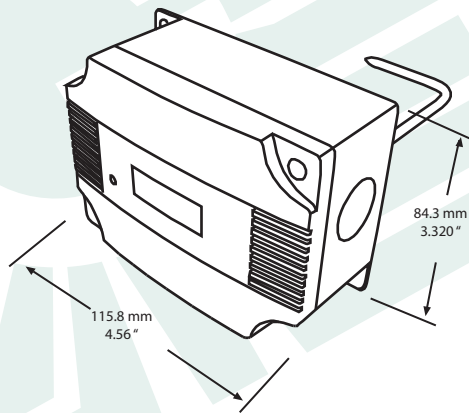


GREYSTONE ENERGY SYSTEMS, INC.

RoHS
COMPLIANT

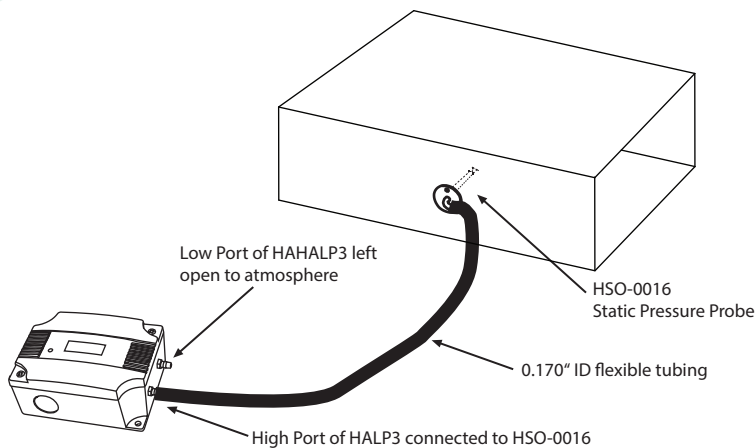


DIMENSIONS

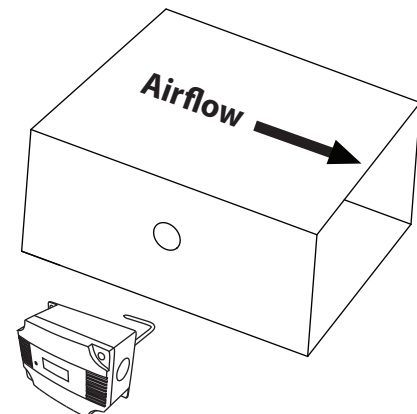


TYPICAL INSTALLATION:

Duct Static Pressure

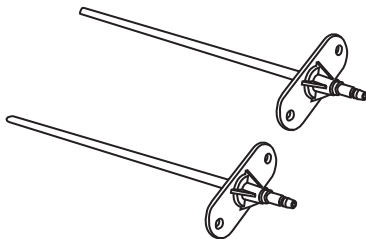


Duct Airflow Velocity

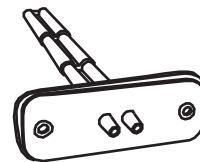


ACCESSORIES:

FPP & SPP - Pitot Tubes



SSS - Differential Pressure Probe



Greystone Energy Systems, Inc. reserves the right to make design modifications without prior notice.



GREYSTONE
ENERGY SYSTEMS INC

Greystone Energy Systems, Inc.
150 English Drive, Moncton,
New Brunswick, Canada E1E 4G7
(506) 853-3057 Fax: (506) 853-6014
North America: 1-800-561-5611
e-mail: mail@greystoneenergy.com
www.greystoneenergy.com

RoHS
COMPLIANT



Greystone Energy Systems Inc. is one of North America's largest ISO registered manufacturers of HVAC sensors and transmitters for Building Automation Management Systems. We have conscientiously established a worldwide reputation as an industry leader by maintaining leading-edge design technology, prompt technical support, and a commitment to on-time deliveries. We take pride in our Quality Management System which is ISO 9001 certified, assuring our customers of consistent product reliability.

GREYSTONE HAS AN **ISO 9001** REGISTERED QUALITY SYSTEM