



# GREYSTONE ENERGY SYSTEMS INC

## WHT SERIES ACCESSORIES

### DESCRIPTION:

**WHT Accessories** help you get the most out of the WHT power monitor. With these and future available accessories, the WHT can be kept up to date. Available accessories are the software, data cable, a safe current transformer 2V/1V input adapter board and BACnet/Modbus Communications board. The 2V/1V adapter board & BACnet/Modbus communications board are configurable to the application you need.

**WHT-SOFTWARE** - The Desktop Software is conveniently loaded on this flash drive. This software will enable you to easily and conveniently interact with the WHT, intelligent power monitor via the data cable. You can quickly program one power monitor, save to your desktop/laptop and then program several more power monitors in a timely fashion. You will also be able to download the information from the WHT and analyze the data.

**WHT-CABLE** - LED lights indicate when the Desktop Software is being transmitted to the WHT, intelligent power monitor and when data is being downloaded into the computer. The WHT-CABLE is 0.9 m (36') long.

**WHT-2V/1V-ADPTR** - Use this adapter board to retrofit the WHT to accept safe CTs with either 2V or 1V secondary output. The same board can be used for either application. Just change the DIP switches to the configuration you need.

**WHT-485** - The WHT-485 is a communication module for the WHT, Intelligent Power Monitor. It reads data from the WHT main processor, formats the data, and transmits it to a network. They allow all of the power system parameters measured by the WHT to be monitored over a single pair of wires. The WHT-485 contains BACnet and Modbus communication protocols. The chosen communication protocol is selected either through the front panel display/keypad or the desktop software. The WHT-485 features 2 contact-closure inputs for monitoring external equipment. Each input can be configured to read contact state (On/Off) or as a Pulse Counter to count pulses from flow meters or other power meters. In the Pulse Counter mode, a Clear command is available to reset the pulse count when desired.

### SPECIFICATIONS:

#### Dimensions

<b>Cable</b>	36" (0.9m) length
<b>Flash Drive</b>	5.72 x 1.59 cm (2.25" x 0.625")
<b>2V/1V Adapter board</b>	5.08 x 8.89cm (2" x 3.5")
<b>Network board</b>	11.4 x 6.6 cm (4.5" x 2.6")

#### Weight

<b>Cable</b>	0.25 kg (0.55 lb)
<b>Flash Drive</b>	0.004 kg (0.01 lb)
<b>2V/1V Adapter board</b>	0.16 kg (0.35 lb)
<b>Network board</b>	0.05 kg (0.1 lb)



WHT-SOFTWARE



WHT-CABLE



WHT-2V/1V-ADPTR



WHT-485

Greystone Energy Systems, Inc. (506) 853-3057 Fax: (506) 853-6014  
150 English Drive, Moncton, North America: 1-800-561-5611  
New Brunswick, Canada E1E 4G7 e-mail: mail@greystoneenergy.com  
www.greystoneenergy.com

RoHS  
COMPLIANT





# GREYSTONE

ENERGY SYSTEMS INC

## SOLID CORE CURRENT TRANSFORMERS

### 5RL Series

The **5RL Series** Solid-Core Current Transformers provide a low-amperage current output proportional to line current and are for use in building automation and metering applications. These low-cost current transformers are ideal as inputs to power monitors, such as the WHT250 and current transducers, such as CVT100.

#### SPECIFICATIONS:

**Primary Current:** 50 thru 1000 Amps Available

**Secondary Current:** 0-5 Amps

**Frequency:** 50-400 Hz

**Insulation Class:** 600V, 10 kV BIL Full Wave

**Terminations:** Lead wires, 61 cm (24"), 16 AWG

**Materials Of Construction:** Plastic, UL94V-1

**Window Size:** 3.9 cm ( 1.56")

**Weight:** 0.45 kg (1 lb)

**Approvals:** UL-recognized component, File #E238872;  
CSA certified, File #245941

**Warranty:** 1 year

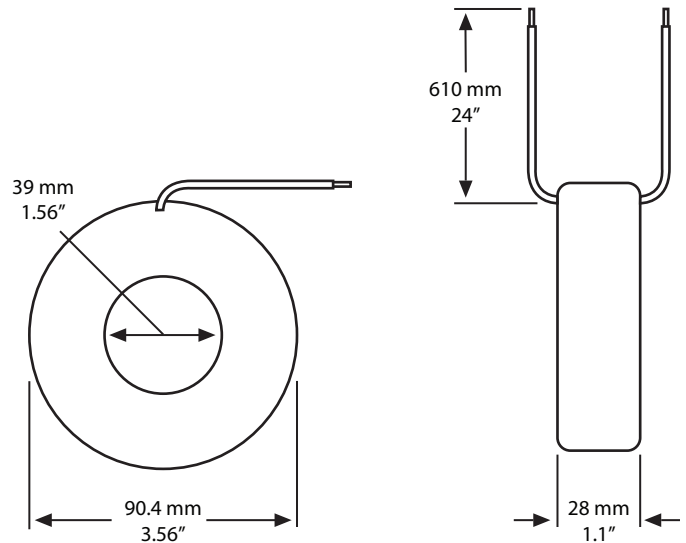


**CAUTION:** Proper safety precautions must be followed by a trained electrician during installation. It is recommended that the incoming power be deenergized before installation. The current transformer must have its secondary terminals short-circuited or the burden (load) connected before energizing the primary circuit. For indoor use only. Use on insulated conductor only.

#### PRODUCT SELECTION INFORMATION:

MODEL 5RL				
PART CODE	CURRENT RATIO	Outer dia 3.56" (90 mm) Window dia 1.56" (39 mm)		
		Accuracy %	VA	
5RL-500	50:5	±2	1.0	
5RL-750	75:5	±2	1.5	
5RL-101	100:5	±2	2.0	
5RL-151	150:5	±1	5.0	
5RL-201	200:5	±1	5.0	
5RL-251	250:5	±1	10.0	
5RL-301	300:5	±1	12.5	
5RL-401	400:5	±1	12.5	
5RL-501	500:5	±1	20.0	
5RL-601	600:5	±1	25.0	
5RL-751*	750:5	±1	25.0	
5RL-801	800:5	±1	25.0	
5RL-102	1000:5	±1	25.0	

\* Special order only and non-returnable



# GREYSTONE

ENERGY SYSTEMS INC

Greystone Energy Systems, Inc.  
150 English Drive, Moncton,  
New Brunswick, Canada E1E 4G7  
(506) 853-3057 Fax: (506) 853-6014  
North America: 1-800-561-5611  
e-mail: mail@greystoneenergy.com  
www.greystoneenergy.com

RoHS  
COMPLIANT



Greystone Energy Systems Inc. is one of North America's largest ISO registered manufacturers of HVAC sensors and transmitters for Building Automation Management Systems.

We have conscientiously established a worldwide reputation as an industry leader by maintaining leading-edge design technology, prompt technical support, and a commitment to on-time deliveries. We take pride in our Quality Management System which is ISO 9001 certified, assuring our customers of consistent product reliability.

GREYSTONE HAS AN ISO 9001 REGISTERED QUALITY SYSTEM



# GREYSTONE ENERGY SYSTEMS INC

## SPLIT-CORE CURRENT TRANSFORMERS 601T Series

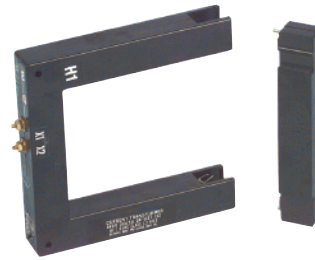
The **Model 601T** Split-Core Current Transformers provide a low amperage current output proportional to line current. They are for use in energy management control and metering applications, and are ideal for use as inputs to power monitors like the WHT250 and current transducers like Model CVT100. These transformers are designed to be assembled around an existing insulated conductor without the need for dismantling the primary bus or cables. The portion of the transformers marked "This End Removable" can be disassembled and then reassembled around the conductors that require current monitoring.

### SPECIFICATIONS:

- Secondary:** 0-5A
- Frequency:** 50-400 Hz
- Insulation Class** 600V, 10 kV BIL Full Wave
- Continuous Thermal Current** 1.33 @ 30°C (86°F) ambient
- Resistor Factor:** 1.0 @ 55°C (131°F) ambient
- Terminations:** Brass stud terminals with nut, flat washer, lockwasher
- Materials Of Construction:** Plastic, UL94V-1
- Window Size:** 11.43 x 11.43 cm (4.5" x 4.5")
- Weight:** 0.68 kg (1.5 lb)
- Approvals:** UL-recognized component, File #E238872; CSA certified, File #245941
- Warranty:** 1 year

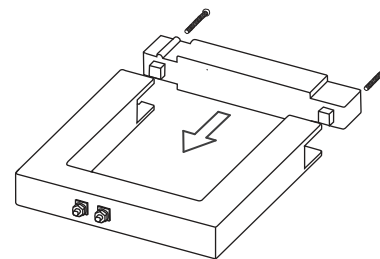
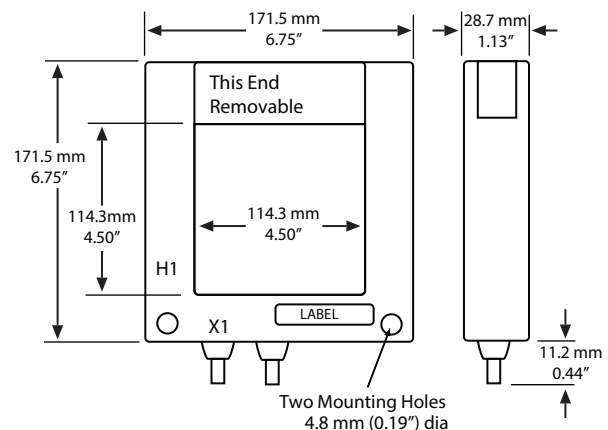
### PRODUCT SELECTION INFORMATION:

MODEL 601T - 4.5" x 4.5" (114 x 114 mm) Window					
MODEL	CURRENT RATIO	ANSI METER CLASS @ 60 Hz			ACCURACY CLASS WITH UNITY POWER FACTOR
		B0.1 2.5 VA	B0.2 5 VA	B0.5 12.5 VA	
601T-301	300:5	--	--	--	± 1% @ 0.5 VA
601T-401	400:5	4.8	--	--	± 1% @ 1.0 VA
601T-501	500:5	4.8	4.8	--	± 1% @ 1.5 VA
601T-601	600:5	2.4	4.8	--	± 1% @ 2.0 VA
601T-801	800:5	1.2	2.4	4.8	± 1% @ 2.5 VA
601T-102	1000:5	1.2	1.2	4.8	± 1% @ 5.0 VA
601T-122	1200:5	1.2	1.2	2.4	± 1% @ 10.0 VA
601T-152	1500:5	1.2	1.2	1.2	± 1% @ 15.0 VA
601T-162	1600:5	1.2	1.2	1.2	± 1% @ 15.0 VA
601T-202	2000:5	0.6	0.6	1.2	± 1% @ 20.0 VA



**CAUTION:** Proper safety precautions must be followed by a trained electrician during installation. It is recommended that the incoming power be deenergized before installation. The current transformer must have its secondary terminals short-circuited or the burden (load) connected before energizing the primary circuit. For indoor use only. Use on insulated conductor only.

### DIMENSIONS:



Greystone Energy Systems, Inc. reserves the right to make design modifications without prior notice.



## GREYSTONE ENERGY SYSTEMS INC

Greystone Energy Systems, Inc.  
150 English Drive, Moncton,  
New Brunswick, Canada E1E 4G7  
(506) 853-3057 Fax: (506) 853-6014  
North America: 1-800-561-5611  
e-mail: mail@greystoneenergy.com  
www.greystoneenergy.com

RoHS COMPLIANT



Greystone Energy Systems Inc. is one of North America's largest ISO registered manufacturers of HVAC sensors and transmitters for Building Automation Management Systems. We have conscientiously established a worldwide reputation as an industry leader by maintaining leading-edge design technology, prompt technical support, and a commitment to on-time deliveries. We take pride in our Quality Management System which is ISO 9001 certified, assuring our customers of consistent product reliability.

GREYSTONE HAS AN ISO 9001 REGISTERED QUALITY SYSTEM



# GREYSTONE

ENERGY SYSTEMS INC

The **UCT Series** of solid core current sensors provide a low voltage (0.333V) output proportional to line current. These are often referred to as "safe", the mV output eliminates the need for shunting switches. The rugged epoxy encapsulated construction comes with 8-foot twisted leads. These low-cost current transformers are ideal as inputs to power monitors, such as the WHT200.

## SPECIFICATIONS:

**Primary:** 5A to 400A, 250A to 5000A

**Secondary:** 0 - 0.333V, 0-0.333 V

**Frequency:** 50 to 10,000 Hz

**Insulation Class:** 600V

**Accuracy:** ±1%; Accuracy at 10% to 130% of rated current

**Lead Wires:** 2.43 m (8') twisted pair leads

**Weight:** 0.4 lb (0.18 kg)

**Approvals:** CE, UL recognized File #E96927

**RoHS Statement:** Yes

**Warranty:** 1 year

# SOLID CORE SAFE CURRENT TRANSFORMERS UCT Series

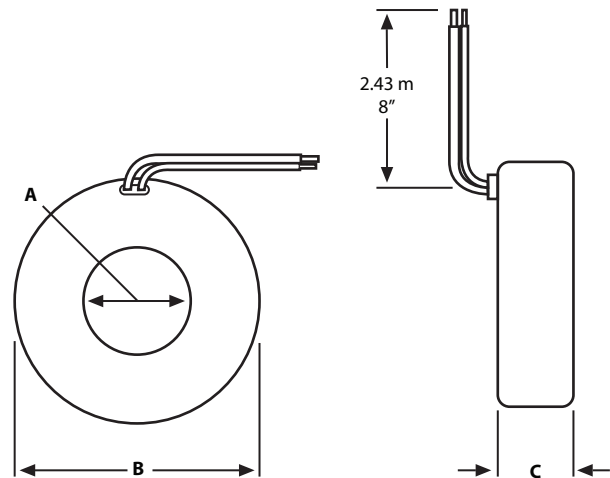


## DIMENSIONS:

Model	Dimensions mm (in)		
	A	B	C
UCT-0300	7.6 (0.30)	43.18 (1.70)	19.05 (0.75)
UCT-1000	25.4 (1.0)	60.96 (2.40)	20.32 (0.80)
UCT-1250	31.75 (1.25)	68.58 (2.70)	20.32 (0.80)

## PRODUCT SELECTION INFORMATION:

MODEL UCT	
PART CODE	CURRENT RATIO
UCT-0300-005	5 A:0.333 Vac
UCT-1000-050	50 A:0.333 Vac
UCT-1250-100	100 A:0.333 Vac
UCT-1250-150	150 A:0.333 Vac
UCT-1250-200	200 A:0.333 Vac
UCT-1250-250	250 A:0.333 Vac
UCT-1250-300	300 A:0.333 Vac
UCT-1250-400	400 A:0.333 Vac



# GREYSTONE

ENERGY SYSTEMS INC

Greystone Energy Systems, Inc.  
150 English Drive, Moncton,  
New Brunswick, Canada E1E 4G7  
(506) 853-3057 Fax: (506) 853-6014  
North America: 1-800-561-5611  
e-mail: mail@greystoneenergy.com  
www.greystoneenergy.com

RoHS  
COMPLIANT



Greystone Energy Systems Inc. is one of North America's largest ISO registered manufacturers of HVAC sensors and transmitters for Building Automation Management Systems.

We have conscientiously established a worldwide reputation as an industry leader by maintaining leading-edge design technology, prompt technical support, and a commitment to on-time deliveries. We take pride in our Quality Management System which is ISO 9001 certified, assuring our customers of consistent product reliability.

GREYSTONE HAS AN ISO 9001 REGISTERED QUALITY SYSTEM



# GREYSTONE ENERGY SYSTEMS INC

The **SCT Series** of current transformers provides a low-voltage (0-0.333 V) output proportional to line current and is used in conjunction with the WHT200 to monitor electrical power systems. Often referred to as "Safe CTs," the mV output of these current transformers eliminates the need for shorting switches, and their split-core design makes them easy to install.

## SPECIFICATIONS:

- Primary Current:** 5 thru-3000A
- Secondary Voltage:** 0-0.333 VAC, 0% to 100% rated current
- Frequency:** 50-400 Hz
- Insulation Class:** 600V
- Accuracy:** ±1%, (10% to 130% rated current)
- Lead Wires:** 8' (2.44m) twisted pair leads, 22 AWG
- Weight:** 1 lb (0.45 kg) maximum
- Approvals:** UL-recognized component, File #E96927 CE
- RoHS Statement:** Yes
- Warranty:** 3 years

## PRODUCT SELECTION INFORMATION:

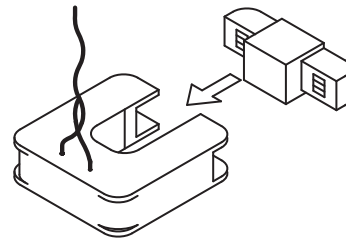
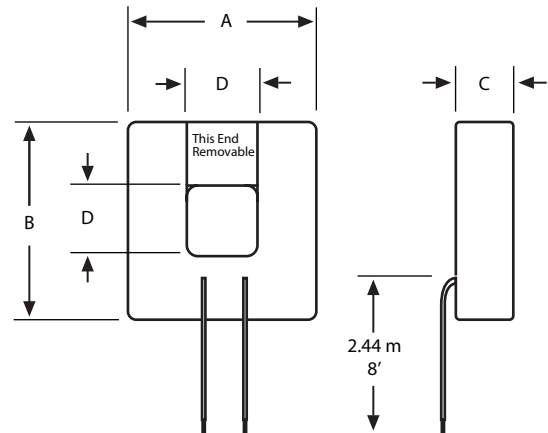
MODEL SCT	
PART CODE	CURRENT RATIO
SCT-0750-005	5 A:0.333 Vac
SCT-0750-010	10 A:0.333 Vac
SCT-0750-020	20 A:0.333 Vac
SCT-0750-030	30 A:0.333 Vac
SCT-0750-050	50 A:0.333 Vac
SCT-0750-070	70 A:0.333 Vac
SCT-0750-0100	100 A:0.333 Vac
SCT-0750-0150	150 A:0.333 Vac
SCT-0750-0200	200 A:0.333 Vac
SCT-2000-100	100 A:0.333 Vac
SCT-2000-200	200 A:0.333 Vac
SCT-2000-400	400 A:0.333 Vac
SCT-2000-600	600 A:0.333 Vac
SCT-2000-800	800 A:0.333 Vac
SCT-2000-1000	1000 A:0.333 Vac
SCT-2000-1200	1200 A:0.333 Vac
SCT-2000-1500	1500 A:0.333 Vac

# SPLIT-CORE SAFE CURRENT TRANSFORMERS SCT Series



## DIMENSIONS:

Model	Dimensions mm (in)			
	A	B	C	D
SCT-0750	51 (2.0)	53 (2.1)	15 (0.61)	19 (0.75)
SCT-2000	120.7 (4.75)	127 (5)	30.5 (1.2)	50.8 (2)



Greystone Energy Systems, Inc. reserves the right to make design modifications without prior notice.



# GREYSTONE ENERGY SYSTEMS INC

Greystone Energy Systems, Inc.  
 150 English Drive, Moncton,  
 New Brunswick, Canada E1E 4G7  
 (506) 853-3057 Fax: (506) 853-6014  
 North America: 1-800-561-5611  
 e-mail: mail@greystoneenergy.com  
 www.greystoneenergy.com

RoHS COMPLIANT



Greystone Energy Systems Inc. is one of North America's largest ISO registered manufacturers of HVAC sensors and transmitters for Building Automation Management Systems. We have conscientiously established a worldwide reputation as an industry leader by maintaining leading-edge design technology, prompt technical support, and a commitment to on-time deliveries. We take pride in our Quality Management System which is ISO 9001 certified, assuring our customers of consistent product reliability.

GREYSTONE HAS AN ISO 9001 REGISTERED QUALITY SYSTEM