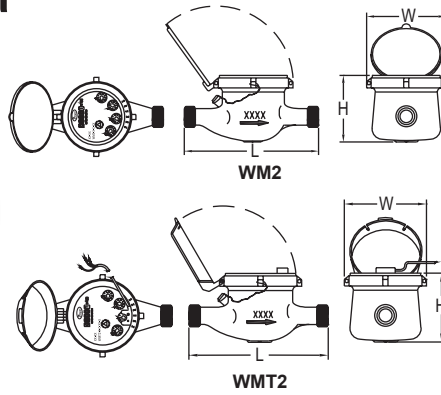
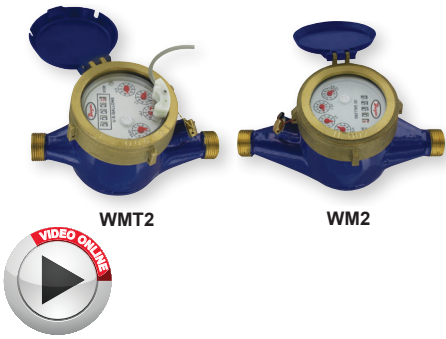




SERIES WM2 & WMT2

# MULTI-JET WATER METER

Economical, Brass Body, Dry Dial



Size in (mm)	Spud NPSM (BSPP)	Length 'L' in (mm)	Width 'W' in (mm)	Height 'H' in (mm)	Weight lb (kg)
5/8 x 1/2 (15)	3/4" (3/4")	6-1/2 (165)	3-45/64 (94)	4-15/64 (107.5)	3.75 (1.7)
5/8 x 3/4	1" (1")	7-1/2 (190)	3-45/64 (94)	4-15/64 (107.5)	3.97 (1.8)
3/4 (20)	1" (1")	7-1/2 (190)	3-45/64 (94)	4-15/64 (107.5)	4.9 (2.2)
1 (25)	1-1/4" (1-1/4")	10-1/4 (260)	3-55/64 (98)	4-5/8 (117.5)	6.4 (2.9)
1-1/4 (32)	1-1/2" (1-1/2")	10-1/4 (260)	3-55/64 (98)	4-5/8 (117.5)	8.2 (3.7)
1-1/2 (40)	2" (2")	11-13/16 (300)	4-51/64 (122)	5-9/16 (141.5)	13.52 (6.17)
2 (50)	2-1/2" (2-1/2")	11-13/16 (300)	5-45/64 (145)	6-31/32 (177)	18.74 (8.5)

The Series WM2 Multi-Jet Water Meter is a series of mechanical, water totalizing meters that display the total water usage in gallons or m<sup>3</sup>. They are available in a range of body sizes and include NPT or BSPT couplings. The Series WMT2 Multi-Jet Water Meter with Pulsed Output is a series of mechanical, water totalizing meters that display the total water usage in gallons or m<sup>3</sup> and provide a reed switch output proportional to flow rate. They are available in a range of body sizes and include NPT or BSPT couplings.

**FEATURES/BENEFITS**

- Multi-jet design allows for simplicity and accuracy with wide flow ranges, even in low flow applications
- Magnetically driven, hermetically sealed register does not leak or fog and is completely separated from the water
- Designed for long service life and maintenance-free operation, even under harsh conditions
- Integral strainer that protects meter from particulate damage
- Easy installation with included coupling adapters

**APPLICATIONS**

- Irrigation
- Cooling systems
- Filtration systems
- Water monitoring

**MODEL CHART**

Model	Size	Coupling Size	Max Flow GPM (Gallons Per Minute)	Nominal Flow Range	Transitional Flow	Display Max (Gallons)	Price
WM2-A-C-01	5/8 x 1/2"	1/2" NPT	20	1 to 20	0.25	9,999,999.99	\$58.50
WM2-A-C-02	5/8 x 3/4"	3/4" NPT	20	1 to 20	0.25	9,999,999.99	66.00
WM2-A-C-03	3/4"	3/4" NPT	30	2 to 30	0.5	99,999,999.9	73.00
WM2-A-C-04	1"	1" NPT	50	3 to 50	0.75	99,999,999.9	104.00
WM2-A-C-06	1-1/2"	1-1/2" NPT	100	5 to 100	1.5	99,999,999.9	212.00
WM2-A-C-07	2"	2" NPT	160	8 to 160	2	99,999,999.9	271.00

**MODEL CHART**

Model	Size	Coupling Size	Max Flow m <sup>3</sup> /h	Nominal Flow Range	Transitional Flow	Display Max (m <sup>3</sup> )	Price
WM2-B-C-08	15 mm	1/2" BSPT	3	0.12 to 1.5	0.03	99,999.9999	\$58.50
WM2-B-C-10	20 mm	3/4" BSPT	5	0.2 to 2.5	0.05	99,999.9999	66.00
WM2-B-C-11	25 mm	1" BSPT	7	0.28 to 3.5	0.07	99,999.9999	104.00
WM2-B-C-12	32 mm	1-1/4" BSPT	12	0.48 to 6	0.12	99,999.9999	127.00
WM2-B-C-13	40 mm	1-1/2" BSPT	20	0.8 to 10	0.2	999,999.9999	211.00
WM2-B-C-14	50 mm	2" BSPT	30	1.2 to 15	0.3	999,999.9999	271.00

**MODEL CHART**

Model	Size	Coupling Size	Max Flow GPM (Gallons Per Minute)	Nominal Flow Range	Transitional Flow	Display Max (Gallons)	Pulse Rate (Gal./Pulse)	Price
WMT2-A-C-01	5/8 x 1/2"	1/2" NPT	20	1 to 10	0.25	9,999,999.99	0.1	\$80.00
WMT2-A-C-02	5/8 x 3/4"	3/4" NPT	20	1 to 20	0.25	9,999,999.99	0.1	87.00
WMT2-A-C-03*	3/4"	3/4" NPT	30	2 to 30	0.25	9,999,999.99	0.1	97.50
WMT2-A-C-04	1"	1" NPT	50	3 to 50	0.75	99,999,999.9	0.1	140.00
WMT2-A-C-01-1	5/8 x 1/2"	1/2" NPT	20	1 to 10	0.25	9,999,999.99	1	84.00
WMT2-A-C-02-1	5/8 x 3/4"	3/4" NPT	20	1 to 20	0.25	9,999,999.99	1	90.50
WMT2-A-C-03-1*	3/4"	3/4" NPT	30	2 to 30	0.25	9,999,999.99	1	97.50
WMT2-A-C-04-1	1"	1" NPT	50	3 to 50	0.75	99,999,999.9	1	140.00
WMT2-A-C-06-10	1-1/2"	1-1/2" NPT	100	5 to 100	1.5	99,999,999.9	10	258.00
WMT2-A-C-07-10	2"	2" NPT	160	8 to 160	2	99,999,999.9	10	341.00
WMT2-A-C-04-100	1"	1" NPT	50	3 to 50	0.75	99,999,999.9	100	140.00
WMT2-A-C-07-100	2"	2" NPT	160	8 to 160	2	99,999,999.9	100	341.00

\*Does not include inlet filter.

**MODEL CHART**

Model	Size	Coupling Size	Max Flow m <sup>3</sup> /h	Nominal Flow Range	Transitional Flow	Display Max (m <sup>3</sup> /h)	Pulse Rate (L/Pulse)	Price
WMT2-B-C-08-1	15 mm	1/2" BSPT	3	0.12 to 1.5	0.03	99,999.9999	1	\$84.00
WMT2-B-C-10-1*	20 mm	3/4" BSPT	5	0.2 to 2.5	0.05	99,999.9999	1	97.50
WMT2-B-C-11-1	25 mm	1" BSPT	7	0.25 to 3.5	0.07	99,999.9999	1	140.00
WMT2-B-C-12-1	32 mm	1-1/4" BSPT	12	0.48 to 6	0.12	99,999.9999	1	162.00
WMT2-B-C-08-10	15 mm	1/2" BSPT	3	0.12 to 1.5	0.03	99,999.9999	10	84.00
WMT2-B-C-12-10	32 mm	1-1/4" BSPT	12	0.48 to 6	0.12	99,999.9999	10	162.00
WMT2-B-C-14-10	50 mm	2" BSPT	30	1.2 to 15	0.3	999,999.9999	10	341.00
WMT2-B-C-12-100	32 mm	1-1/4" BSPT	12	0.48 to 6	0.12	99,999.9999	100	162.00
WMT2-B-C-14-100	50 mm	2" BSPT	30	1.2 to 15	0.3	999,999.9999	100	341.00

\*Does not include inlet filter.

**SPECIFICATIONS**

**Service:** Water.  
**Wetted Materials:** Body: Brass, polyethylene; Couplings: Brass; Measuring Chamber: Polyethylene, ABS plastic, ferrite, acetal.  
**Flow Range:** See model chart.  
**Accuracy:** Transitional flow: ±5%; Nominal flow: ±2%.  
**Temperature Limit:** 104°F (40°C).  
**Pressure Limit:** 232 psi (16 bar).  
**Totalizing Display Maximum:** See model chart.  
**Output Signal:** Pulse output with frequency proportional to flow rate (WMT2 only).  
**Pulse Options:** 0.1 gal, 1 gal, 10 gal, 100 gal per pulse (1 L, 10 L, 100 L per pulse) (WMT2 only).  
**Electrical Rating:** 0.01 A @ 24 VAC/DC (WMT2 only).  
**Electrical Connections:** Color-coded lead wires, 4.5' (1.5 m) long (WMT2 only).  
**Mounting Orientation:** Horizontal with the register face pointing up.  
**Weight:** See dimension chart.