



**Innovations in Comfort,
Energy Efficiency,
and Safety Solutions
for Buildings**

545wyn, Wynwood, Miami, Florida

2022
Product Range Overview





Achieve Indoor Air Quality

Helping to Attain your Ventilation Strategy

HVAC system operation is a critical requirement maintaining adequate safe indoor air quality (IAQ). HVAC systems can be transformed into safe and reliable systems with Belimo damper actuators, control valves, sensors, and meters to improve system performance and ensure occupant safety, and comfort. Our retrofit solutions offer quick and convenient replacements, compatible with all major control systems. Belimo retrofit solutions maximize system performance; meet UL standards and the new ASHRAE requirements.



Discover more
www.belimo.us



5-year warranty



PMB, GMB(X), and AMB(X) Non Fail-Safe Damper Actuator Product Range



5-year warranty



		Power Supply		Power Consumption		Running Time	Housing Type	Drive Type	Custom Options	Control Input			Control Input MFT			Position Feedback	Bulk Pack																		
		AC 24 V ± 20%	AC 24...240 V +10%/-20%, 50/60 Hz	DC 24...125 V ± 10%	AC 100...240 V ±10%	VA Rating	Wattage Running (Holding)	Motor Drive (Default)	NEMA 1, 2, or 4X	I = Heater Built-in NEMA Housing Y or H = OPTIONAL Heater	Rotary "M", Linear "L", Integrated Damper "Mx"	Select Mechanical Coupler	Select Electrical Connection	On/Off	Floating Point	2...10 V or 4...20 mA (w/500 Ω Resistor)	Honeywell Series 90, 0...135 Ω	BACnet/MS/TP or Modbus RTU (1)	BACnet/IP or Modbus TCP (2)	0.5...20 V Phasecut	On/Off	Floating Point	Start and Span adj., Start 0.5...30 V Span 2.5...32 V	PWM adj., 0.02...50 Seconds	2...10 V (Default) Adjustable with MFT	Digital (1), Resistive Feedback	SPDT, 3A (0.5A Inductive) @ 250 V	Optional Accessories: Aux. Switch (S1A, S2A), Potentiometer (P-A GR)	Quantity of Actuators in Bulk Pack						
PMB Series 1400 in-lb [160 Nm]	PMBUP-3-T	●			52	20 (6)	35	4X		M			●	●														2							
	PMBUP-MFT-T	●			52	20 (6)	35	4X	●	M			●	●	1													2							
GMB Series 360 in-lb [40 Nm] Approx. 90 sq.ft.	GMB24-3	●			6	4.0 (2.0)	150	2		M			●	●																					
	GMB24-SR	●			6.5	4.5 (2.0)	150	2		M				●																					
	GMB24-IP	●			8	5.5 (3)	150	1		M					2													1							
	GM24A-MOD	●			7	3.5 (1.6)	150	2		M					1													1							
	GMB24-MFT	●			7	4.5 (1.5)	150	2		M																									
GMX Series 360 in-lb [40 Nm] Approx. 90 sq.ft.	Customizable*	GMX24-3	●		6	4.0 (2.0)	150	2		M	●	●	●	●																					
		GMX24-3-T N4	●			6	4.0 (2.0)	150	4X	Y	M	●	●	●	●																				
		GMX24-SR	●			6.5	4.5 (2.0)	150	2		M	●	●		●																				
		GMX24-SR-T N4	●			6.5	4.5 (2.0)	150	4X	Y	M	●	●		●																				
		GMX24-PC	●			7	4.5 (1.5)	150	2		M	●	●				●																		
		GMX120-3	●		●	7	4.0 (2.0)	150	2		M	●	●	●	●																				
		GMX24-MFT	●			7	4.5 (1.5)	75...300 (150)	2		M	●	●																						
		GMX24-MFT N4	●			7	4.5 (1.5)	75...300 (150)	4X	Y	M	●	●																						
AMB Series 180 in-lb [20 Nm] Approx. 45 sq.ft.	AMB24-3	●			5.5	2.5 (0.5)	95	2		M			●	●																					
	AMB24-3-S	●			5.5	2.5 (0.5)	95	2		M			●	●															1						
	AMB24-SR	●			5	2.5 (0.4)	95	2		M				●																					
	AMB24-SR-T	●			5	2.5 (0.4)	95	1		M				●																					
	AMB24-IP	●			8	6 (3)	150	1		M																									
	SM24A-MOD	●			6	3.5 (1.4)	150	2		M					1																				
	AMB24-MFT	●			6	3.5 (1.4)	150	2		M																									
	AMCB24-MFT	●			26	4 (1.5)	35	2		M																									
	AMB120-3	●		●	7	3.0 (0.6)	95	2		M				●	●																				
AMX Series 180 in-lb [20 Nm] Approx. 45 sq.ft.	Customizable*	AMX24-3	●		5.5	2.5 (0.5)	95	2		M	●	●	●	●																					
		AMX24-3-T	●			5.5	2.5 (0.5)	95	1		M	●	●	●	●																				
		AMX24-3-T N4	●			5.5	2.5 (0.5)	95	4X	Y	M	●	●	●	●																				
		AMX24-SR	●			5	2.5 (0.4)	95	2		M	●	●		●																				
		AMX24-SR-T	●			5	2.5 (0.4)	95	1		M	●	●		●																				
		AMX24-SR-T N4	●			5	2.5 (0.4)	95	4X	Y	M	●	●		●																				
		AMX24-PC	●			5.5	3.5 (1.3)	90	2		M	●	●				●																		
		AMX120-3	●		●	7	3.0 (0.6)	95	2		M	●	●	●	●																				
		AMX120-SR	●		●	7.5	4.0 (1.0)	95	2		M	●	●		●																				
		AMX24-MFT	●			6	3.5 (1.4)	90...300 (150)	2		M	●	●																						
		AMX24-MFT N4	●			6	3.5 (1.4)	90...300 (150)	4X	Y	M	●	●																						
		AMX24-MFT-T N4	●			6	3.5 (1.4)	90...300 (150)	4X	Y	M	●	●																						
		AMCX24-MFT	●			26	4 (1.5)	35...120 (35)	2		M	●	●																						
AMCX24-MFT-T N4	●			26	3.5 (1.4)	35...120 (35)	4X	Y	M	●	●																								
AMX24-MFT95	●			6	3.5 (1.3)	75...150 (150)	2		M	●	●				●																				

Y_10003 - 04/22 - Subject to change. © Belimo Aircontrols (USA), Inc.

See pages 1-7 through 1-10 of the Product Guide and Price List for additional generic product series specifications. Visit www.belimo.us for detailed product specifications and downloadable data sheets. *See pages 5-13 to 5-16 of the Product Guide and Price List for customization options.

AMQB(X), AHB(X), and AHQB(X) Non Fail-Safe Damper Actuator Product Range



5-year warranty



		Power Supply	Power Consumption	Running Time	Housing Type	Drive Type	Custom Options	Control Input	Control Input MFT	Position Feedback	Bulk Pack	
		AC 24 V ± 20%, 50/60 Hz VDC ±10%										
		AC 24...240 V +10%/- 20%, 50/60 Hz										
		DC 24...125 V ± 10%										
		AC 100...240 V ±10%										
		VA Rating										
		Wattage Running (Holding)										
		Motor Drive (Default)										
		NEMA 1, 2, or 4X										
		I = Heater Built-in NEMA Housing Y or H = OPTIONAL Heater										
		Rotary "M", Linear "L", Integrated Damper "Mx"										
		Select Mechanical Coupler										
		Select Electrical Connection										
		On/Off										
		Floating Point										
		2...10 V or 4...20 mA (w/500 Ω Resistor)										
		Honeywell Series 90, 0...135 Ω										
		BACnet: MS/TP or Modbus RTU (1)										
		BACnet/IP or Modbus TCP (2)										
		0.5...20 V Phasecut										
		On/Off										
		Floating Point										
		Start and Span adj., Start 0.5...30 V										
		Span 2.5...32 V										
		PWM adj., 0.02...50 Seconds										
		2...10 V (Default) Adjustable with MFT										
		Digital (1), Resistive Feedback										
		SPDT, 3A (0.5A Inductive) @ 250 V										
		Optional Accessories: Aux. Switch (STA, S2A), Potentiometer (P..A GR)										
		Quantity of Actuators in Bulk Pack										
AMQB(X) 140 in-lb [16 Nm]		AMQB24-1	●	26	15 (1.5)	7	2					●
		AMQB24-MFT	●	26	15 (1.5)	7	2					●
	☼	AMQX24-MFT	●	26	15 (1.5)	7...15 (7)	2	●	●			●
AHB Series 100 lbf [450 N Force] 4" or 8" stroke		AHB24-3-100	●	4.5	2.0 (0.5)	150	2		●	●		
		AHB24-3-200	●	4.5	2.0 (0.5)	150	2		●	●		
		AHB24-SR-100	●	4.5	2.5 (0.5)	150	2				●	
		AHB24-SR-200	●	4.5	2.5 (0.5)	150	2				●	
AHX Series 100 lbf [450 N Force] 4", 8", 12" stroke	Customizable*	AHX24-3-100	●	4.5	2.0 (0.5)	150...450 (150)	2		●	●	●	
		AHX24-3-200	●	4.5	2.0 (0.5)	150...450 (150)	2		●	●	●	
		AHX24-3-300	●	4.5	2.0 (0.5)	150...450 (150)	2		●	●	●	
		AHX120-3-100	●	4.5	2.5 (0.5)	150...450 (150)	2		●	●	●	
		AHX120-3-200	●	4.5	2.5 (0.5)	150...450 (150)	2		●	●	●	
		AHX120-3-300	●	4.5	2.5 (0.5)	150...450 (150)	2		●	●	●	
		AHX24-SR-100	●	4.5	2.5 (0.5)	150...450 (150)	2		●			●
		AHX24-SR-200	●	4.5	2.5 (0.5)	150...450 (150)	2		●			●
		AHX24-MFT-100	●	6	3.5 (1.3)	150...450 (150)	2		●			●
		AHX24-MFT-200	●	6	3.5 (1.3)	150...450 (150)	2		●			●
		AHX24-MFT-300	●	6	3.5 (1.3)	150...450 (150)	2		●			●
AHQB(X) 44 lbf [200 N Force]		AHQB24-1-100	●	23	13 (1.5)	7	2					●
		AHQB24-MFT-100	●	23	13 (1.5)	7	2					●
	☼	AHQX24-MFT-100	●	23	13 (1.5)	7...20 (7)	2	●				●

See pages 1-7 through 1-10 of the Product Guide and Price List for additional generic product series specifications. Visit www.belimo.us for detailed product specifications and downloadable data sheets.

*See pages 5-13 to 5-16 of the Product Guide and Price List for customization options.

NMB(X) and NMQB(X) Non Fail-Safe Damper Actuator Product Range



5-year warranty



		Power Supply	Power Consumption	Running Time	Housing Type	Drive Type	Custom Options	Control Input	Control Input MFT	Position Feedback	Bulk Pack		
		AC 24 V ± 20%, 50/60 Hz VDC ± 10%	Wattage Running (Holding)	Motor Drive (Default)	NEMA 1, 2, or 4X	Rotary "M", Linear "L", Integrated Damper "Mx"	Select Mechanical Coupler Select Electrical Connection	On/Off Floating Point 2...10 V or 4...20 mA (w/500 Ω Resistor) Honeywell Series 90, 0...135 Ω BACnet: MS/TP or Modbus RTU (1) BACnet/IP or Modbus TCP (2) 0.5...20 V Phasecut	On/Off Floating Point Start and Span adj., Start 0.5...30 V Span 2.5...32 V PWM adj., 0.02...50 Seconds 2...10 V (Default) Adjustable with MFT	Digital (1), Resistive Feedback SPDT, 3A (0.5A Inductive) @ 250 V Optional Accessories: Aux. Switch (STA, S2A), Potentiometer (P-A GR)	Quantity of Actuators in Bulk Pack		
NMB Series 90 in-lb [10 Nm] Approx. 22 sq. ft.	NMB24-3	•	4 2.0 (0.2)	95	2	M		• •			•		
	NMCB24-3	•	4 2.0 (0.2)	45	2	M		• •			•		
	NMB24-SR	•	5 1.5 (0.4)	95	2	M			•		•		
	NMB24-SR-T	•	5 1.5 (0.4)	95	1	M			•		•		
	NMCB24-SR	•	5 2.5 (0.4)	45	2	M		•			•		
	NMB24-IP	•	6 4.5 (3)	150	1	M				2	• 1	•	
	NM24A-MOD	•	6 3.5 (1.4)	150	2	M				1		•	
	NMB24-MFT	•	6 3.5 (1.3)	150	2	M	• •		• • • •			•	
NMX Series 90 in-lb [10 Nm] Approx. 22 sq. ft.	Customizable*	NMX24-3	•	4 2.0 (0.2)	95	2	M	• • • •				•	
		NMX24-3-T	•	4 2.0 (0.2)	95	1	M	• • • •				•	
		NMX24-3-T N4	•	4 2.0 (0.2)	95	4X	Y	M	• • • •				•
		NMX24-SR	•	5 1.5 (0.4)	95	2	M	• •		•			•
		NMX24-SR-T	•	5 1.5 (0.4)	95	1	M	• •		•			•
		NMX24-SR-T N4	•	5 1.5 (0.4)	95	4X	Y	M	• •		•		•
		NMX120-3	•	5.5 3.5 (0.6)	150	2	M	• • • •					•
		NMX120-SR	•	6.5 3.5 (1.0)	150	2	M	• •		•			•
		NMX24-MFT	•	6 3.5 (1.3)	45...150 (150)	2	M	• •		• • • •			•
		NMX24-MFT N4	•	6 3.5 (1.3)	45...150 (150)	4X	Y	M	• •		• • • •		•
		NMX24-MFT-T N4	•	6 3.5 (1.3)	45...150 (150)	4X	Y	M	• •		• • • •		•
		NMX24-MFT95	•	6 3.5 (1.3)	45...150 (150)	2	M	• •		•			•
NMCX24-MFT	•	5 3.5 (1.25)	20...75 (45)	2	M	• •		• • • •			•		
NMQB(X) 70 in-lb [8 Nm]	NMQB24-1	•	23 13 (1.5)	4	2	M		•				•	
	NMQB24-MFT	•	23 13 (1.5)	4	2	M			• •			•	
	C* NMQX24-MFT	•	23 13 (1.5)	4...20 (4)	2	M	• •		• • • •			•	

See pages 1-7 through 1-10 of the Product Guide and Price List for additional generic product series specifications. Visit www.belimo.us for detailed product specifications and downloadable data sheets.

*See pages 5-13 to 5-16 of the Product Guide and Price List for customization options.

UM and UH Non Fail-Safe Damper Actuator Product Range



		Power Supply		Power Consumption		Running Time	Housing Type	Drive Type	Drive Directions		Shaft Coupling		Custom Options			Connection Plug		Control Input		Position Feedback		Bulk Pack	
		AC 24 V ± 20%, 50/60 Hz VDC ± 10%	AC 100...240 V ± 10%	VA Rating	Wattage Running (Holding)				Motor Drive (Default)	NEMA 1, 2, or 4X	Rotary "M", Linear "L", Integrated Damper "Mx"	Counter-Clockwise Rotation	Clockwise Rotation	Universal Clamp 1.4" to 1/2" [6...12.7 mm]	Form fit (8x8mm)	Select Mounting Clip	Select Electrical Connection	Select Electrical Cover	Molex Mini-Fit Jr. 39303035	Molex Mini-Fit Jr. 39303045	On/Off		Floating Point
UM Series Universal Clamp 9 in-lb [1 Nm] Approx. 2.25 sq. ft.	UM24Y-L	●		2	1 (0.5)	22 / 90°	1	M	●		●		●	●	●	●		●	●				
	UM24Y-L.1	●		2	1 (0.5)	22 / 90°	1	M	●		●		●	●	●	●		●	●			100	
	UM24Y-R	●		2	1 (0.5)	22 / 90°	1	M		●	●		●	●	●	●		●	●				
	UM24Y-R.1	●		2	1 (0.5)	22 / 90°	1	M		●	●		●	●	●	●		●	●			100	
	UM230Y-L	●		4.5	2 (1.5)	22 / 90°	1	M	●		●		●	●	●	●		●	●				
	UM230Y-L.1	●		4.5	2 (1.5)	22 / 90°	1	M	●		●		●	●	●	●		●	●			100	
	UM230Y-R	●		4.5	2 (1.5)	22 / 90°	1	M		●	●		●	●	●	●		●	●				
	UM230Y-R.1	●		4.5	2 (1.5)	22 / 90°	1	M		●	●		●	●	●	●		●	●			100	
	UM24Y-SR-L	●		2.5	1.5 (0.5)	22 / 90°	1	M	●		●		●	●	●	●		●		●			
	UM24Y-SR-L.1	●		2.5	1.5 (0.5)	22 / 90°	1	M	●		●		●	●	●	●		●		●			100
	UM24Y-SR-R	●		2.5	1.5 (0.5)	22 / 90°	1	M		●	●		●	●	●	●		●		●			
	UM24Y-SR-R.1	●		2.5	1.5 (0.5)	22 / 90°	1	M		●	●		●	●	●	●		●		●			100
UM Series 9 in-lb [1 Nm] Approx. 2.25 sq. ft. Form Fit	UM24Y-F-L	●		2	1 (0.5)	22 / 90°	1	M	●		●		●	●	●	●		●	●				
	UM24Y-F-R	●		2	1 (0.5)	22 / 90°	1	M		●		●	●	●	●	●		●	●				
	UM230Y-F-L	●		4.5	2 (1.5)	22 / 90°	1	M	●		●		●	●	●	●		●	●				
	UM230Y-F-R	●		4.5	2 (1.5)	22 / 90°	1	M		●		●	●	●	●	●		●	●				
	UM24Y-SR-F-L	●		2.5	1.5 (0.5)	22 / 90°	1	M	●		●		●	●	●	●		●		●			
	UM24Y-SR-F-R	●		2.5	1.5 (0.5)	22 / 90°	1	M		●		●	●	●	●	●		●		●			
UH Series 11 lbf [50 N Force] 2.4" [60 mm] stroke	UH24Y-L	●		2	1.5 (0.5)	73 / 60 mm	1	L	●				●	●	●	●		●	●				
	UH230Y-L	●		4.5	2 (1.5)	73 / 60 mm	1	L	●				●	●	●	●		●	●				
	UH24Y-SR-L	●		2.5	1.5 (0.5)	73 / 60 mm	1	L	●				●	●	●	●		●		●			

See page 1-10 of the Product Guide and Price List for additional generic product series specifications. Visit www.belimo.us for detailed product specifications and downloadable data sheets.

NMV, LMV, LHV, CMBV AFMC Damper Actuator Product Range



5-year warranty



	Power Supply	Power Consumption		Running Time	Application			Operation and Servicing			Housing Type	Cabling	Drive Type		Control Input			Feedback	Sensor Integration (Select 1 of 3)			
		VA Rating	Wattage Running (Holding)		Motor Drive (Seconds)	CAV (0...3000 fpm)	VAV (0...3000 fpm)	Open Loop (0...3000 fpm)	NFC Interface for Android	NFC for iPhone via ZIP-BT-NFC*			PC-Tool	ZTH	Rotary "M", Linear "L"	Integrated Damper Blade	2...10 V or 4...20 mA (w/500 Ω Resistor)		BACnet: MS/TP or Modbus RTU	MP Bus	2...10 V (Default) Adjustable with MFT	Optional Accessories: Aux. Switch (S1A, S2A), Potentiometer (P..A GR)
	AC 24 V ± 20%, 50/60 Hz VDC ± 10%										NEMA 1 or 2	Conduit Connector Available**										
NMV Series 90 in-lb [10 Nm]	NMV-D3-MP	●	5	3 (1.5)	150	●	●	●	●	●	2	●	M	●	●	●	●	●	●	●	●	●
	NMV-D3-MOD	●	5	3 (1.5)	150	●	●	●	●	●	2	●	M	●	●	●	●	●	●	●	●	●
	NMV-D3-MFT	●	5	3 (1.5)	150	●	●	●	●	●	2	●	M	●	●	●	●	●	●	●	●	●
LMV Series 45 in-lb [5 Nm]	LMV-D3-MP	●	3.5	2 (1)	150	●	●	●	●	●	2	●	M	●	●	●	●	●	●	●	●	●
	LMV-D3-MOD	●	4	2 (1)	150	●	●	●	●	●	2	●	M	●	●	●	●	●	●	●	●	●
	LMV-D3-MFT	●	3.5	2 (1)	150	●	●	●	●	●	2	●	M	●	●	●	●	●	●	●	●	●
LHV Series 34 lbf [150 N]	LHV-D3-MP-100	●	4.5	2.5 (1.5)	150	●	●	●	●	●	2	●	L (4")	●	●	●	●	●	●	●	●	●
	LHV-D3-MP-200	●	4.5	2.5 (1.5)	150	●	●	●	●	●	2	●	L (8")	●	●	●	●	●	●	●	●	●
	LHV-D3-MP-300	●	4.5	2.5 (1.5)	150	●	●	●	●	●	2	●	L (12")	●	●	●	●	●	●	●	●	●
CMBV Series 18 in-lb [2 Nm]	CMBV-100-MFT	●	2.5	1.5 (1)	70	●	●	●	●	●	1		M	4"	●	●	●	●				
	CMBV-125-MFT	●	2.5	1.5 (1)	70	●	●	●	●	●	1		M	5"	●	●	●	●				
	CMBV-150-MFT	●	2.5	1.5 (1)	70	●	●	●	●	●	1		M	6"	●	●	●	●				

See page 1-14 of the Product Guide and Price List for additional generic product series specifications. Visit www.belimo.us for detailed product specifications and downloadable data sheets.
 *Zip-BT-NFC is not included in the purchase of this actuator. Please refer to page 5-1 of the Product Guide and Price List for more information.
 **Conduit connector (TF-CC US) not included in the purchase of this actuator. Please refer to page 5-11 of the Product Guide and Price List for more information.

PKB, GKB(X), EFB Fail-Safe Damper Actuator Product Range



5-year warranty



		Power Supply		Power Consumption		Running Time		Housing Type		Drive Type		Custom Options		Control Input				Control Input MFT		Position Feedback																		
		AC 24 V ± 20%	AC 24...240 V +10%/-20%, 50/60 Hz	DC 24...125 V ± 10%	AC 120 V ± 10%	AC 230 V ± 10%	VA Rating (Actuator/Heater)	Wattage Running/Heater (Holding)	Motor Drive (Default)	Fail-Safe	NEMA 1, 2, or 4X	I = Heater Built-in NEMA Housing Y or H = OPTIONAL Heater	Rotary "M", Linear "L"	Select Mechanical Coupler	Select Electrical Connection	On/Off	Floating Point	2...10 V or 4...20 mA (w/500 Ω Resistor)	Honeywell Series 90, 0...135 Ω	3k Ω (1), 10k Ω (2) NTC Thermistor	6...9 V, 20 V Output Voltage	BACnet: MS/TP or Modbus RTU (1) BACnet/IP or Modbus TCP (2)	0.5...20 V Phasecut	On/Off	Floating Point	Start and Span adj., Start 0.5...30 V (2.0) Span 2.5...32 V (8.0)	PWM adj., 0.02...50 Seconds	2...10 V (Default) Adjustable with MFT	Digital (1), Resistive Feedback	SPDT, 3A, (0.5A Inductive) @ 250 V, (1 or 2)	Optional Accessories: Aux. Switch (S1A, S2A), Potentiometer (P-A GR)							
PKB Series 1400 in-lb [160 Nm]	PKBUP-MFT-T	•				68	52 (9)	35	30	4X	•	M									1	•	•	•	•													
GKB Series 360 in-lb [40 Nm] Approx. 90 sq. ft.	GKB24-3	•				21	11 (3)	150	35	2		M			•	•																				•		
	GKB24-SR	•				21	11 (3)	150	35	2		M				•																				•		
	GKB24-IP	•				21	11 (3)	150	35	1		M									2															•		
	GKB24-MFT	•				21	11 (3)	150	35	2		M												•	•	•										•		
GKX Series 360 in-lb [40 Nm] Approx. 90 sq. ft.	Customizable*	GKX24-3	•			21	11 (3)	150	35	2		M	•	•	•	•																				•		
		GKX24-3-T N4	•			21/21	11/21 (3)	150	35	4X	H	M	•	•	•	•																					•	
		GKX24-SR	•				21	11 (3)	150	35	2		M	•	•		•																				•	
		GKX24-SR-T N4	•			21/21	11/21 (3)	150	35		H	M	•	•		•																					•	
		GKX24-MFT	•				21	11 (3)	150	35	2		M	•	•										•	•	•										•	
		GKX24-MFT-T N4	•			21/21	11/21 (3)	150	35	4X	H	M	•	•											•	•	•										•	
EFB Series 270 in-lb [30 Nm] Approx. 68 sq. ft.	EFB24	•				16	9.5 (4.5)	75	<20	2		M			•																							
	EFB24 N4	•				16	9.5 (4.5)	75	<20	4		M			•																							
	EFB24-S	•				16	9.5 (4.5)	75	<20	2		M			•																						2	
	EFB120		•	•		21	9.5 (4.5)	75	<20	2		M			•																							
	EFB120-S		•	•		21	9.5 (4.5)	75	<20	2		M			•																						2	
	EFB120-S N4		•	•		21	9.5 (4.5)	75	<20	4		M			•																						2	
	EFB120-S		•	•		21	9.5 (4.5)	75	<10	2		M			•																						2	
	EFB24-SR	•				14	8.0 (4.5)	95	<20	2		M				•																					•	
	EFB24-SR N4	•				14	8.0 (4.5)	95	<20	4		M				•																					•	
	EFB24-SR-S	•				14	8.0 (4.5)	95	<20	2		M				•																						2
	EFB24-MFT	•				16	9.5 (4.5)	60-150 (150)	<20	2		M													•	•	•	•	•									•
	EFB24-MFT-S	•				16	9.5 (4.5)	60-150 (150)	<20	2		M													•	•	•	•	•									2

See pages 2-7 and 2-8 of the Product Guide and Price List for additional generic product series specifications. Visit www.belimo.us for detailed product specifications and downloadable data sheets.

*See pages 5-13 to 5-16 of the Product Guide and Price List for customization options.

AFX, AHKX, and NFB Fail-Safe Damper Actuator Product Range



5-year warranty



	Power Supply	Power Consumption	Running Time	Housing Type	Drive Type	Custom Options	Control Input				Control Input MFT				Position Feedback				
							2...10 V or 4...20 mA (w/500 Ω Resistor)	3k Ω (1), 10k Ω (2) NTC Thermistor	6...9 V, 20 V Output Voltage	BACnet: MS/TP or Modbus RTU (1) BACnet/IP or Modbus TCP (2)	0.5...20 V Phasecut	On/Off	Floating Point	Start and Span adj., Start 0.5...30 V (2.0) Span 2.5...32 V (8.0)	PWM adj., 0.02...50 Seconds	2...10 V (Default) Adjustable with MFT	Digital (1), Resistive Feedback	SPDT, 3A (0.5A Inductive) @ 250 V, (1 or 2)	Optional Accessories: Aux. Switch (S1A, S2A), Potentiometer (P..A.GR)
	AC 24 V ± 20%, 50/60 Hz VDC ± 10%																		
	AC 24...240 V +10%/- 20%, 50/60 Hz																		
	DC 24...125 V ± 10%																		
	AC 120 V ± 10%																		
	AC 230 V ± 10%																		
	VA Rating (Actuator/Heater)																		
	Wattage Running/Heater (Holding)																		
	Motor Drive (Default)																		
	Fail-Safe																		
	NEMA 1, 2, or 4X																		
	I = Heater Built-in NEMA Housing Y or H = OPTIONAL Heater																		
	Rotary "M", Linear "L"																		
	Select Mechanical Coupler																		
	Select Electrical Connection																		
	On/Off																		
	Floating Point																		
	2...10 V or 4...20 mA (w/500 Ω Resistor)																		
	Honeywell Series 90, 0...135 Ω																		
	3k Ω (1), 10k Ω (2) NTC Thermistor																		
	6...9 V, 20 V Output Voltage																		
	BACnet: MS/TP or Modbus RTU (1) BACnet/IP or Modbus TCP (2)																		
	0.5...20 V Phasecut																		
	On/Off																		
	Floating Point																		
	Start and Span adj., Start 0.5...30 V (2.0) Span 2.5...32 V (8.0)																		
	PWM adj., 0.02...50 Seconds																		
	2...10 V (Default) Adjustable with MFT																		
	Digital (1), Resistive Feedback																		
	SPDT, 3A (0.5A Inductive) @ 250 V, (1 or 2)																		
	Optional Accessories: Aux. Switch (S1A, S2A), Potentiometer (P..A.GR)																		
AFX Series 180 in-lb [20 Nm] Approx. 45 sq.ft.	Customizable*	AFX24	●		7.5	5 (2.5)	75	<20	2		M	●	●	●					
		AFX24 N4	●		7.5	5 (2.5)	75	<20	4X	H	M	●	●	●					
		AFX24-S	●		7.5	5 (2.5)	75	<20	2		M	●	●	●				2	
		AFX24-S N4	●		7.5	5 (2.5)	75	<20	4X	H	M	●	●	●				2	
		AFXUP		●	18	7 (3.5)	75	<20	2		M	●	●	●					
		AFXUP N4		●	18	7 (3.5)	75	<20	4X	H	M	●	●	●					
		AFXUP-S		●	18	7 (3.5)	75	<20	2		M	●	●	●				2	
		AFXUP-S N4		●	18	7 (3.5)	75	<20	4X	H	M	●	●	●				2	
		AFX24-SR	●		8.5	5.5 (3)	95	<20	2		M	●	●		●				●
		AFX24-SR N4	●		8.5	5.5 (3)	95	<20	4X	H	M	●	●		●				●
		AFX24-SR-S	●		8.5	5.5 (3)	95	<20	2		M	●	●		●				2
		AFX24-SR-S N4	●		8.5	5.5 (3)	95	<20	4X	H	M	●	●		●				2
		AFX24-MFT	●		10	7.5 (3)	70...220 (150)	<20	2		M	●	●			●	●	●	●
		AFX24-MFT N4	●		10	7.5 (3)	70...220 (150)	<20	4X	H	M	●	●			●	●	●	●
		AFX24-MFT-S	●		10	7.5 (3)	70...220 (150)	<20	2		M	●	●			●	●	●	●
		AFX24-MFT-S N4	●		10	7.5 (3)	70...220 (150)	<20	4X	H	M	●	●			●	●	●	●
		AFX24-MFT95	●		10	7.5 (3)	70...220 (150)	<20	2		M	●	●		●				●
AFX24-MFT95 N4	●		10	7.5 (3)	70...220 (150)	<20	4X	H	M	●	●		●				●		
AHKX Series 100 lbf [450 N]	Customizable*	AHKX24-MFT-100	●		22	11 (3)	90...150 (150)	35	2		L,4"	●			●	●	●	●	
NFB Series 90 in-lb [10 Nm] Approx. 22 sq.ft.		NFB24	●		8.5	6 (2.5)	75	<20	2		M		●						
		NFB24-S	●		8.5	6 (2.5)	75	<20	2		M		●					2	
		NFBUP		●	9.5	6 (2.5)	75	<20	2		M		●						
		NFBUP-S		●	9.5	6 (2.5)	75	<20	2		M		●						
		NFB24-SR	●		6	3.5 (2.5)	95	<20	2		M			●				●	
		NFB24-SR-S	●		6	3.5 (2.5)	95	<20	2		M			●				●	
		NF24A-MOD	●		9.5	7.0 (3.5)	150	<20	2		M				1				
		NFB24-MFT	●		9	6.5 (3)	40-150 (150)	<20	2		M					●	●	●	●
		NFB24-MFT-S	●		9	6.5 (3)	40-150 (150)	<20	2		M					●	●	●	●

See pages 2-7 and 2-8 of the Product Guide and Price List for additional generic product series specifications. Visit www.belimo.us for detailed product specifications and downloadable data sheets.
*See pages 5-13 to 5-16 of the Product Guide and Price List for customization options.

NFX and NKQB(X) Fail-Safe Damper Actuator Product Range



5-year warranty



		Power Supply		Power Consumption		Running Time		Housing Type	Drive Type	Custom Options	Control Input						Control Input MFT	Position Feedback																							
		AC 24 V ± 20%, 50/60 Hz VDC ± 10%	AC 24...240 V +10%/- 20%, 50/60 Hz	DC 24...125 V ± 10%	AC 120 V ± 10%	AC 230 V ± 10%	VA Rating (Actuator/Heater)	Wattage Running/Heater (Holding)	Motor Drive (Default)	Fail-Safe	NEMA 1, 2, or 4X	I = Heater Built-in NEMA Housing Y or H = OPTIONAL Heater	Rotary "M", Linear "L"	Select Mechanical Coupler	Select Electrical Connection	On/Off	Floating Point	2...10 V or 4...20 mA (w/500 Ω Resistor)	Honeywell Series 90, 0...135 Ω	3k Ω(1), 10k Ω (2) NTC Thermistor	6...9 V, 20 V Output Voltage	BACnet: MS/TP or Modbus RTU (1) BACnet/IP or Modbus TCP (2)	0.5...20 V Phasecut	On/Off	Floating Point	Start and Span adj., Start 0.5...30 V (2.0) Span 2.5...32 V (8.0)	PWM adj., 0.02...50 Seconds	2...10 V (Default) Adjustable with MFT	Digital (1), Resistive Feedback	SPDT, 3A (0.5A Inductive) @ 250 V, (1 or 2)	Optional Accessories: Aux. Switch (S1A, S2A), Potentiometer (P..A GR)										
NFX Series 90 in-lb [10 Nm] Approx. 22 sq.ft.	Customizable*	NFX24	●			8.5	6 (2.5)	75	<20	2		M	●	●	●																										
		NFX24 N4	●				8.5	6 (2.5)	75	<20	4X	H	M	●	●	●																									
		NFX24-S	●				8.5	6 (2.5)	75	<20	2		M	●	●	●																					2				
		NFX24-S N4	●				8.5	6 (2.5)	75	<20	4X	H	M	●	●	●																						2			
		NFXUP		●			9.5	6 (2.5)	75	<20	2		M	●	●	●																									
		NFXUP N4		●			9.5	6 (2.5)	75	<20	4X	H	M	●	●	●																									
		NFXUP-S		●			9.5	6 (2.5)	75	<20	2		M	●	●	●																							2		
		NFXUP-S N4		●			9.5	6 (2.5)	75	<20	4X	H	M	●	●	●																							2		
		NFX24-SR		●			6	3.5 (2.5)	95	<20	2		M	●	●	●		●																						●	
		NFX24-SR N4		●			6	3.5 (2.5)	95	<20	4X	H	M	●	●	●		●																						●	
		NFX24-SR-S		●			6	3.5 (2.5)	95	<20	2		M	●	●	●		●																						●	
		NFX24-SR-S N4		●			6	3.5 (2.5)	95	<20	4X	H	M	●	●	●		●																						●	
		NFX24-MFT		●			9	6.5 (3)	40...150 (150)	<20	2		M	●	●	●											●	●	●	●	●										
		NFX24-MFT N4		●			9	6.5 (3)	40...150 (150)	<20	4X	H	M	●	●	●										●	●	●	●	●											
NFX24-MFT-S		●			9	6.5 (3)	40...150 (150)	<20	2		M	●	●	●										●	●	●	●	●											2		
NFX24-MFT-S N4		●			9	6.5 (3)	40...150 (150)	<20	4X	H	M	●	●	●										●	●	●	●	●											2		
NKQB Series 54 in-lb [6 Nm] Approx. 12 sq.ft.		NKQB24-1	●			22	11 (3)	4	4	2		M			●																							●			
		NKQB24-SR	●			22	11 (3)	4	4	2		M					●																						●		
NKQX Series 54 in-lb [6 Nm]	Customizable*	NKQX24-1	●			22	11 (3)	4,7,10 (4)	4	2		M	●	●	●																								●		
		NKQX24-SR	●			22	11 (3)	4,7,10 (4)	4	2		M	●	●			●																						●		
		NKQX24-MFT	●			22	11 (3)	4,7,10 (4)	4	2		M	●	●											●	●	●	●	●											●	

See pages 2-7 and 2-8 of the Product Guide and Price List for additional generic product series specifications. Visit www.belimo.us for detailed product specifications and downloadable data sheets.
*See pages 5-13 to 5-16 of the Product Guide and Price List for customization options.

Y_10003 - 04/22 - Subject to change. © Belimo Aircontrols (USA), Inc.

FSAF*A, FSAFB, FSNF, FSLF, FSTF Fire and Smoke Fail-Safe Damper Actuator Product Range



5-year warranty



	Power Supply			Power Consumption		Running Time		Control Input	Auxiliary Switches		
	AC/DC 24 V	AC 120 V	AC 230 V	VA Rating	Wattage Running (Holding)	Motor Drive	Fail-Safe	On/Off	2 SPST	2 SPDT	
FSAF*A Series 180 in-lb [20 Nm] Approx. 18 sq. ft. @ 350°F	FSAF24A	•		32	23 (5)	<25	<15	•			
	FSAF24A-S	•		32	23 (5)	<25	<15	•	•		
	FSAF120A		•	30	24 (7.5)	<25	<15	•			
	FSAF120A-S		•	30	24 (7.5)	<25	<15	•	•		
	FSAF230A			•	37	29 (10)	<25	<15	•		
	FSAF230A-S			•	37	29 (10)	<25	<15	•	•	
FSAFB Series 180 in-lb [20 Nm] Approx. 18 sq. ft. @ 250°F	FSAFB24-SR	•		9.5	6 (3)	<75	<20	2...10 V			
	FSAFB24-SR-S	•		9.5	6 (3)	<75	<20	2...10 V		•	
FSNF Series 70 in-lb [8 Nm] Approx. 12 sq. ft. @ 350°F	FSNF24 US	•		27	18 (3)	<15	<15	•			
	FSNF24-S US	•		27	18 (3)	<15	<15	•		•	
	FSNF120 US		•	27	22 (6)	<15	<15	•			
	FSNF120-S US		•	27	22 (6)	<15	<15	•		•	
	FSNF230 US			•	27	22 (5)	<15	<15	•		
	FSNF230-S US			•	27	22 (5)	<15	<15	•		•
FSLF Series 30 in-lb [3.5 Nm] Approx. 4 sq. ft. @ 350°F	FSLF24 US	•		15	12 (2.5)	<15	<15	•			
	FSLF24-S US	•		15	12 (2.5)	<15	<15	•	•		
	FSLF120 US		•	18	15 (4)	<15	<15	•			
	FSLF120-S US		•	18	15 (4)	<15	<15	•	•		
	FSLF230 US			•	17	15 (4)	<15	<15	•		
	FSLF230-S US			•	17	15 (4)	<15	<15	•	•	
FSTF Series 18 in-lb [2 Nm] Approx. 1.5 sq. ft. @ 250°F	FSTF24 US	•		3	2 (1.5)	<75	<25	•			
	FSTF24-S US	•		3	2 (1.5)	<75	<25	•	•		
	FSTF120 US		•	3.5	2 (1.5)	<75	<25	•			
	FSTF120-S US		•	3.5	2 (1.5)	<75	<25	•	•		
	FSTF230 US			•	4.5	2.5 (2)	<75	<25	•		
	FSTF230-S US			•	4.5	2.5 (2)	<75	<25	•	•	

VA Rating Note:

The FSAF*A, FSNF, and FSLF series actuators draw more current when driving against any stops. Neither UL nor Belimo requires any local fusing or breakers. If used, see individual data sheets for End Stop current draws and current limit values.

See retrofit installation instructions for details.

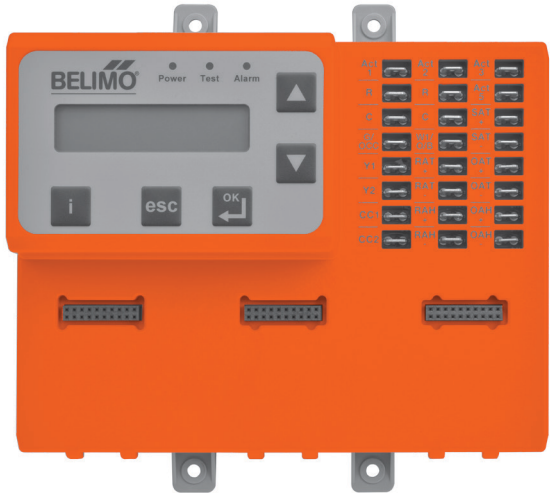
Use FSTF actuators only for dampers less than 1.5 sq.ft. at 250°F.

Use FSLF for dampers 4 sq.ft. and less at 350°F. No linkages are currently available.

Use FSNF for dampers 4...12 sq.ft. at 350°F and use FSAF*A for larger dampers and multisection applications. Linkages are available for FSAF*A and FSAFB, FSNF, and FSTF.

Y_10003 - 04/22 - Subject to change. © Belimo Aircontrols (USA), Inc.

ZIP Economizer Product Range



ECON-ZIP-BASE



5-year warranty

SPECIFICATIONS

Power supply	AC 24 V ±20%, 50/60 Hz, Class 2 power
Power consumption*	4 VA base control (ECON-ZIP-BASE) 5.5 VA base control with Energy Module (ECON-ZIP-BASE + ECON-ZIP-EM) 5 VA base control with Communication Module (ECON-ZIP-BASE + ECON-ZIP-COM) 6.5 VA base control with Energy Module and Communication Module
Supported temperature sensor	NTC 10K-2 thermistor sensor auto-detection
Supported humidity sensor	0...10 V; sensor auto-detection
Supported CO ₂ sensor	0...10 V; sensor auto-detection
Environmental	RoHS, conformally coated
Ambient temperature	-40...+158°F [-40...+70°C]
Storage temperature	-40...+176°F [-40...+80°C]
Humidity	5...95% R.H. (non-condensing)
Wiring	¼" male spade connectors
Housing material	UL94-5VA
Housing	NEMA 1
Display	2x16 character LCD; LED backlight
Display operating temperature**	-22...+176°F [-30...+80°C]
Agency Listings	EMC according to UL60730-1, cULus according to UL873, CAN/CSA C22.2, No. 24-93, IECC
Energy code compliant	ASHRAE 90.1, CA Title 24, NECB, IECC

*The power consumption is for the control only and does not include connected loads such as actuator, compressors, fans, and sensors.

**At low temperatures the display has decreased response time. Below -22°F [-30°C], it will not function.




FAIL-SAFE ACTUATORS***

Model #	Torque	Control Input	Feedback	Power Supply	Running Time(s)		VA Rating
					Ⓜ	Ⓢ	
AFB24-SR	180 in-lb [20 Nm]	2...10 V	2...10 V	AC/DC 24 V	95 seconds	<20 seconds	8.5
NFB24-SR	90 in-lb [10 Nm]	2...10 V	2...10 V	AC/DC 24 V	95 seconds	<20 seconds	6
LF24-SR US	35 in-lb [4 Nm]	2...10 V	2...10 V	AC/DC 24 V	150 seconds	<25 seconds	5
TFB24-SR	22 in-lb [2.5 Nm]	2...10 V	2...10 V	AC/DC 24 V	95 seconds	<25 seconds	4



*** Up to three actuators can be wired in parallel. Visit www.belimo.us for details.

Belimo fail-safe actuators must be used to facilitate faster commissioning procedures (-SR required).

SENSORS

	Temperature	ECON-ZIP-10K	The ECON-ZIP-10K allows for reliable air temperature readings. The sensor may be used for outdoor air (OAT), return air (RAT), or supply air (SAT) temperature measurements and control, with no configuration required. A minimum of one SAT and one OAT sensor is required for the ZIP Economizer to function. An RAT sensor can be added for differential temperature change over strategy. For best control results, sensors should be placed in the air stream. The T-Bracket mounting is universal and can be inserted through the ductwork, fan housing or surface mounted.
	Carbon Dioxide (CO₂) Sensor	22DC-51	The 22DC-51 Carbon Dioxide (CO ₂) air quality sensor may be incorporated to further increase energy savings and occupant comfort through Demand Control Ventilation (DCV). By directly measuring CO ₂ concentration levels in the served space the outside air damper position will modulate to accommodate for changes in space occupancy (CO ₂). ECON-ZIP-EM required for Demand Control Ventilation functionality.
	Temperature/Humidity	ECON-ZIP-TH	The ECON-ZIP-TH Sensor may be used to measure temperature and humidity in the outdoor or return air stream. The temperature and humidity output is via 2 discrete analog channels that can be independently measured with a multimeter. One sensor is used in the outdoor air intake for single enthalpy changeover strategy. An additional sensor can be added in the return air stream for differential enthalpy changeover strategy. Note: When using the ECON-ZIP-TH it is not necessary to use a separate temperature sensor ECON-ZIP-10K for outdoor air (OAT), return air (RAT).

MODULES

	Energy	ECON-ZIP-EM	The ZIP Economizer Energy Module provides additional I/Os to offer higher control functionalities that will save even more energy. The Energy Module is needed for demand control ventilation, indoor fan- 2 speed control or remote diagnostic alarm notification, power exhaust fan, remote override for damper positioning, and preoccupancy purge. The auto-detection and plug and play capability offers quick set up.
	Communication	ECON-ZIP-COM	The ZIP Economizer Communication Module provides remote diagnostic alarm indication with future capabilities such as data trending and building automation integration. Required for BACnet MS/TP communication.

800-543-9038 USA

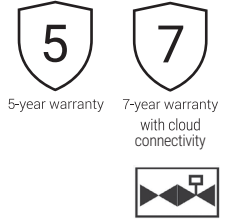
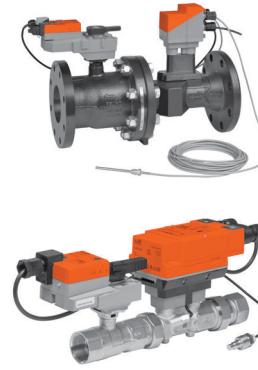
866-805-7089 CANADA

203-791-8396 LATIN AMERICA/CARIBBEAN

Energy Valve (EV) Product Range

	Valve Nominal Size		Type	Suitable Actuators				
	GPM Range	Inches	DN [mm]	2-way	Non Fail-Safe	Electronic Fail-Safe		
NPT	1.65...6.6*	½	15	EV050	LRX-E (N4)	AKRX-E (N4)		
	2.7...11*	¾	20	EV075				
	4.5...18.2*	1	25	EV100				
	7.1...28.5*	1¼	32	EV125	NRX-E (N4)			
	11...44*	1½	40	EV150	ARX-E (N4)			
	16.5...66*	2	50	EV200				
	25...100*	2	50	EV200H**				
Flanged ANSI 125	38...127*	2½	65	EV250SU-127	ARB(X)24-EV	AKRB(X)24-EV		
	54...180*	3	80	EV300SU-180	GRB(X)24-EV	GKRB(X)24-EV		
	95...317*	4	100	EV400SU-317				
	149...495*	5	125	EV500SU-495				
	214...713*	6	150	EV600SU-713	ARB(X)24-EV	AKRB(X)24-EV		
Flanged ANSI 250	38...127*	2½	65	EV250SU-127-250			GRB(X)24-EV	GKRB(X)24-EV
	54...180*	3	80	EV300SU-180-250				
	95...317*	4	100	EV400SU-317-250				
	149...495*	5	125	EV500SU-495-250			GRB(X)24-EV	GKRB(X)24-EV
	214...713*	6	150	EV600SU-713-250				

*V_{nom} = Maximum flow for each valve body size.
 ** Fluid temperature range is 39...250°F [4...120°C]



MODE OF OPERATION

The Energy Valve is an energy metering pressure independent control valve that optimizes, documents, and proves water coil performance.

PRODUCT FEATURES

Measures Energy: using its built-in electronic flow sensor and supply and return temperature sensors.

Controls Power: with its Power Control logic, providing linear heat transfer regardless of temperature and pressure variations.

Manages Delta T: by solving Low Delta T Syndrome. In addition, it reduces pumping costs while increasing chiller/boiler efficiency by optimizing coil efficiency.

ACTUATOR SPECIFICATIONS

Control type	modulating
Manual override	LR, NR, AR, GR, AKR, GKR
Electrical connection	3 ft. [1 m] cable with ½" conduit fitting
Communication	BACnet IP, BACnet MS/TP, listed by BTL, web server, Modbus RTU/IP, Belimo MP-Bus, analog

VALVE SPECIFICATIONS

Fluid	chilled or hot water, up to 60% glycol max
Sizes	½", ¾", 1", 1¼", 1½", 2", 2½", 3", 4", 5", 6"
End fitting	NPT female (½...2") pattern to mate with ANSI 125 or 250 flange (2½...6")
Materials	
Body	
Valve	forged brass, nickel plated (½...2") cast iron - GG25 (2½...6")
Sensor housing	forged brass, nickel plated (½...2") ductile iron - GGG50 (2½...6")
Ball	stainless steel
Stem	stainless steel
Characterizing disc	Tefzel® (½...2") stainless steel (2½...6")
Fluid temp range	14...250°F [-10...+120°C], 39...250°F [4...120°C] (EV200H)
Body pressure rating	360 psi (½...2"), ANSI 125, Class B (2½...6") ANSI 250 (2½...6")
Close-off pressure	200 psid (½...2"), 175 psid (ANSI 125, 2½...6") 310 psid (ANSI 250, 2 ½...6")
Differential pressure range (ΔP)	see technical documentation
Remote temperature sensor length	
½...2"	9.8 ft. [3 m]
2½...6"	32.8 ft. [10 m]
Leakage	0%
Rangeability	100:1
Flow control tolerance	5%
Flow measurement tolerance	2%

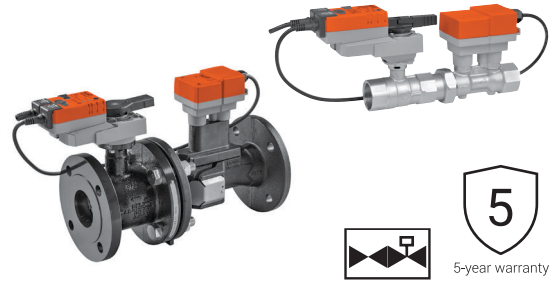
Electronic Pressure Independent Control Valve (EPIV) Product Range

	Valve Nominal Size			Type	Suitable Actuators	
	V ^{nom} [GPM]	Inches	DN [mm]	2-way	Non Fail-Safe	Electronic Fail-Safe
NPT	5.5*	½	15	P2050SU-055	LRX24-EP2(-MOD)	AKRX24-EP2
	10.3*	¾	20	P2075SU-103		
	18.2*	1	25	P2100SU-182		
	28.5*	1¼	32	P2125SU-285	NRX24-EP2(-MOD)	
	39.6*	1½	40	P2150SU-396		
	76.1*	2	50	P2200SU-761	ARX24-EP2(-MOD)	
	100*	2	50	P2200SU-1000**		
Flanged ANSI 125	127*	2½	65	P6250SU-127	ARX24-EP2(-MOD)	GKRX24-EP2
	180*	3	80	P6300SU-180		
	317*	4	100	P6400SU-317	GRX24-EP2(-MOD)	
	495*	5	125	P6500SU-495		
	713*	6	150	P6600SU-713		
Flanged ANSI 250	127*	2½	65	P6250SU-127-250	ARX24-EP2(-MOD)	AKRX24-EP2
	180*	3	80	P6300SU-180-250		
	317*	4	100	P6400SU-317-250	GRX24-EP2(-MOD)	
	495*	5	125	P6500SU-495-250		
	713*	6	150	P6600SU-713-250		

*V^{nom} = Maximum flow for each valve body size.

** Fluid temperature range is 39...250°F [4...120°C].

Note: For all models, flows can be field set to 30% of nominal flow rate.



MODE OF OPERATION

The 2-way EPIV is a pressure independent characterized control valve with an integrated electronic flow meter and a powerful control algorithm. The EPIV maintains the flow setpoint regardless of system pressure variations and modulates the valve based on its measured true flow.

PRODUCT FEATURES

Provides True Flow measurements, simplifying the flow verification. Easy integration via BACnet or Modbus for monitoring and controlling.

ACTUATOR SPECIFICATIONS

Control type	modulating
Power supply	AC/DC 24 V
Manual override	LR, NR, AR, GR, AKR, GKR
Electrical connection	3 ft. [1 m] cable with ½" conduit fitting
Communication	analog and Belimo MP-Bus BACnet MS/TP, Modbus RTU (-MOD actuators)

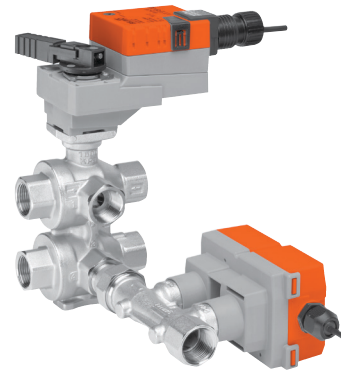
VALVE SPECIFICATIONS

Fluid	chilled or hot water, up to 60% glycol max
Sizes	½", ¾", 1", 1¼", 1½", 2", 2½", 3", 4", 5", 6"
End fitting	NPT female (½"...2") pattern to mate with ANSI 125 or 250 flange (2½"...6")
Materials	
Body	
Valve	brass, nickel plated (½"...2") cast iron - GG25 (2½"...6")
Flow sensor	forged brass, nickel plated (½"...2") ductile iron - GGG50 (2½"...6")
Ball	stainless steel
Stem	stainless steel
Characterizing disc	Tefzel® (½"...2") stainless steel (2½"...6")
Fluid temp range	14...250°F [-10...+120°C] 39...250°F [4...120°C] (P2200SU-1000)
Body pressure rating	360 psid (½"...2") ANSI 125, Class B (2½"...6") ANSI 250 (2½"...6") (-250)
Close-off pressure	200 psid (½"...2") 175 psid (2½"...6") 310 psid (2 ½"...6") (-250)
Differential pressure range (ΔP)	see technical documentation
Leakage	0%
Rangeability	100:1
Flow control tolerance	5%
Flow measurement tolerance	±2%

Y_10003 - 04/22 - Subject to change. © Belimo Aircontrols (USA), Inc.

6-Way Electronic Pressure Independent Control Valve (EPIV) Product Range

Flow V'nom [GPM]	Valve Nominal Size		Type	Suitable Actuators
	Inches	DN [mm]	EPIV 6-way	Non Fail-Safe
5.5	½	15	P3050B6-K	LRX24-LP-EP6
5.5	½	15	P3050B6-KS	
10.3	¾	20	P3075B6-J	
10.3	¾	20	P3075B6-JS	



5-year warranty

MODE OF OPERATION

The 6-way EPIV is designed for chilled beams, radiant ceiling panels, and 4-pipe fan coil units providing true flow and dynamic balancing. It has the functionality of up to four 2-way control valves and two balancing valves, saving material and installation time.

PRODUCT FEATURES

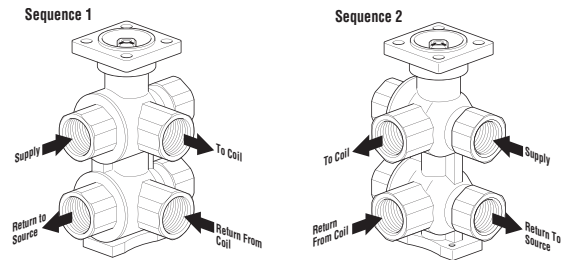
Performs changeover and modulating control for a single coil 4-pipe system. Provides different flow settings for heating and cooling with zero percent leakage saving energy and costs.

ACTUATOR SPECIFICATIONS

Control type	modulating
Power supply	AC/DC 24 V
Manual override	LRX24-LP-EP6
Electrical connection	3 ft. [1 m] cable with ½" conduit fitting
Controllable flow range	90°
Communication	Analog, Belimo MP-Bus, BACnet MS/TP, Modbus RTU

VALVE SPECIFICATIONS

Fluid	chilled or hot water, up to 60% glycol max
Controllable flow range	
Sequence 1	0...30° angle
Dead zone	30...60°
Sequence 2	60...90° angle
Sizes	½", ¾"
End fitting	NPT
Materials	
Body	nickel plated brass
Ball	chrome plated brass
Stem	nickel plated brass
Seats	Teflon® PTFE
Seat o-rings	EPDM
Characterizing disc	chrome plated steel
Stem o-rings	EPDM
Fluid temp range	43...180°F [6...82°C]
Body pressure rating	232 psi
Close-off pressure	50 psid
Minimum differential pressure at V'nom	7 psi
Maximum differential pressure	15 psi
Leakage	0%
Rangeability	100:1
Flow control tolerance	±6%
Flow measurement tolerance	±2%



ZoneTight Pressure Independent Zone Valve (PIQCV) Product Range

	Valve Nominal Size			Type	Suitable Actuators	
	GPM	Inches	DN [mm]	2-way with PT ports	Non Fail-Safe	Fail-Safe
NPT	0.9*	½	15	Z2050QPT-B	CQ Series	CQK Series
	2.0*	½	15	Z2050QPT-D		
	4.3*	½	15	Z2050QPT-F		
	9.0*	¾	20	Z2075QPT-G		
Press Fit	0.9*	½	15	Z2050QPTPF-B		
	2.0*	½	15	Z2050QPTPF-D		
	4.3*	½	15	Z2050QPTPF-F		
	9.0*	¾	20	Z2075QPTPF-G		

*Maximum flow value can be field adjusted, see actuator instructions.
Order "X" model actuators for Factory Clip Setting, see instruction manual for details.

Clip Position for Flow Adjustment (GPM)

	1	2	3	4	5	6	N	No Clip
Z2050QPT(PF)-B (½")	N/A	N/A	N/A	N/A	0.4	N/A	0.8	0.9
Z2050QPT(PF)-D (½")	0.2	0.3	0.4	0.6	0.9	1.3	1.8	2.0
Z2050QPT(PF)-F (½")	N/A	0.6	0.8	1.3	1.9	2.8	3.6	4.3
Z2075QPT(PF)-G (¾")	N/A	1.8	2.7	3.7	4.9	6.3	7.7	9.0
Actuator Runtime	30 s	37 s	43 s	49 s	55 s	62 s	68 s	75 s

For additional intermediate settings see technical documentation or the ZoneTight flow capacity setting within SelectPro on www.belimo.us.

*Specify upon ordering.

**If temperature exceeds 212°F [100°C] operating range due to a boiler control failure the valve will safely contain the hot water but manufacturer's product warranty becomes invalid.



MODE OF OPERATION

The ZoneTight Pressure Independent Zone Valve (PIQCV) is a two-way valve which combines the functionality of a control valve and a pressure regulating valve, creating one precise product which is unaffected by pressure variations in a system.

PRODUCT FEATURES

Provides constant flow regardless of pressure variations in the system. Simplified valve sizing and selection, no Cv calculations required.

ACTUATOR SPECIFICATIONS

Control type	
-3	on/off, floating point
-SR	modulating, 0.5...10 V*, 2...10 V
Blank	on/off
Manual override	use actuator to turn valve stem
Electrical connection	3 ft. [1 m] cable with ½" conduit fitting, screw terminals
Power consumption	
CQ..	0.3 W running, 0.2 W holding
CQK..	2.5 W running, 0.5 W holding
CQ..UP	1.0 W running, 0.7 W holding
CQK..UP	3.0 W running, 0.5 W holding
Power supply	AC/DC 24 V (AC 110...240 V, UP)
Power consumption	
CQ..	0.6 VA
CQK..	5 VA
CQ..UP	2 VA
CQK..UP	7 VA

VALVE SPECIFICATIONS

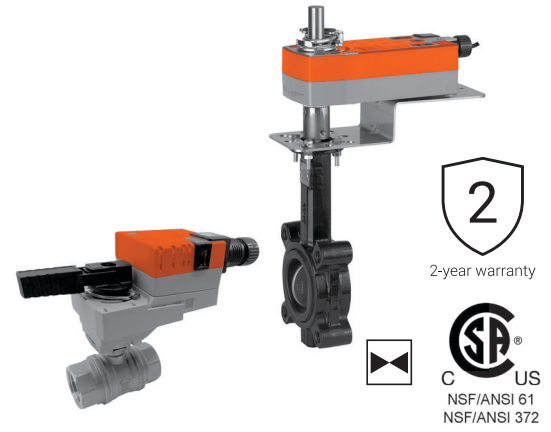
Fluid	chilled or hot water, up to 60% glycol max
Flow characteristic	equal percentage
Controllable flow range	75°
Sizes	½", ¾"
End fitting	NPT female, press fit
Materials	
Body	forged brass
Ball	stainless steel
Stem	stainless steel
Seats	Teflon® PTFE
O-rings	EPDM
Spring	stainless steel
Fluid temp range	36...212°F [2...100°C]**
Fluid temp limit	250°F [120°C]**
Max. allowable operating temperature	212°F [100°C]
PT ports	2
Body pressure rating	360 psi (NPT), 250 psi (press fit)
Close-off pressure	200 psid
Differential pressure (ΔP) range	5...50 psid
Leakage	0%
Flow control tolerance	±5%

Y_10003 - 04/22 - Subject to change. © Belimo Aircontrols (USA), Inc.

Potable Water Valve Product Range

BALL VALVES

Valve Nominal Size				Type	Suitable Actuators			
NPT	C _v	Inches	DN [mm]	2-way	Non Fail-Safe		Fail-Safe	
		32	½	15	EXT-B2050-PWV-NPT	CQ		CQK
	49	¾	20	EXT-B2075-PWV-NPT		LR Series		LF Series
	81	1	25	EXT-B2100-PWV-NPT				



MODE OF OPERATION

The potable water valve is operated by a rotary actuator. The actuator is controlled by standard voltage for on/off or floating point control system which move the ball or disc of the valve to the position dictated by the control system.

PRODUCT FEATURES

NSF/ANSI 61 - Water Quality
NSF/ANSI 372 - Lead Free

ACTUATOR SPECIFICATIONS

Control type	on/off, floating point
Manual override	CQ, CQK, LR, AM, AF, GM, GR, GK, DR, DK, PR, PK, SY series
Electrical connection	3 ft. [1 m] cable with ½" conduit fitting, terminal block

VALVE SPECIFICATIONS

Fluid	potable water
Flow characteristic	full port
Sizes	½", ¾", 1", 2", 2½", 3", 4", 5", 6", 8", 10"
End fittings	
Ball Valve	NPT female
Butterfly Valve	for ASME/ANSI Class 125/150 flange
Materials - Ball Valve	
Body	lead free brass
Characterizing ball	chrome plated lead free brass
Stem	lead free brass
Seats	PTFE
O-rings	EPDM
Materials - Butterfly Valve	
Body	ductile iron ASTM A536
Body finish	black epoxy powder coating
Disc	aluminum bronze
Shaft	416 stainless steel
Seat	EPDM
O-ring	Buna-N
Bushings	PTFE
Fluid temp range	
Ball Valves	-4...+212°F [-20...+100°C]
Butterfly Valves	-20...+250°F [-32...+120°C]
Body pressure rating	600 psi (NPT), 200 psi (flanged)
Close-off pressure	200 psid (NPT), 150 psid (flanged)
Max. operating pressure	230 psid (NPT), 200 psid (flanged)
Leakage	0%
Dead end service	
Butterfly Valve	bidirectional approved

BUTTERFLY VALVES

Valve Nominal Size				Type	Suitable Actuators				
C _v @ 90°	C _v @ 60°	Inches	DN [mm]	2-way	Non Fail-Safe		Fail-Safe		N4
115	44	2	50	EXT-LD14102BE1AX	AM Series		AF Series		
196	75	2½	65	EXT-LD14125BE1AX				GR Series	GK Series
302	116	3	80	EXT-LD14103BE1AX		GM	GK		
600	230	4	100	EXT-LD14104BE1AX		DR Series	DK Series		
1022	392	5	125	EXT-LD14105BE1AX					DR Series
1579	605	6	150	EXT-LD14106BE1AX				PR	PK
3136	1202	8	200	EXT-LD14108BE1AX					
5340	2047	10	250	EXT-LD14110BE1AX					SY

ZoneTight Zone Valve (QCV) Product Range

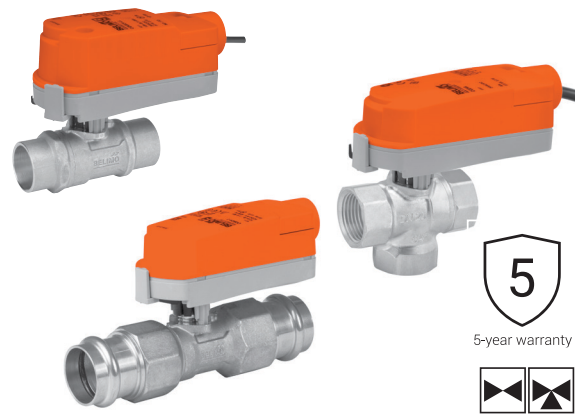
	Valve Nominal Size			Type		Suitable Actuators	
	C _v	Inches	DN [mm]	2-way	3-way	Non Fail-Safe	Fail-Safe
NPT	1.4*	½	15	Z2050Q-F		CQB Series	CQKB Series
	5.9*	½	15	Z2050Q-J			
	9.8*	¾	20	Z2075Q-K			
	8.2*	1	25	Z2100Q-K			
	1	½	15		Z3050Q-E		
	2.7	½	15		Z3050Q-H		
	4.6	¾	20		Z3075Q-J		
	4.4	1	25		Z3100Q-J		
Sweat	1.4*	½	15	Z2050QS-F			
	5.9*	½	15	Z2050QS-J			
	9.8*	¾	20	Z2075QS-K			
	8.2*	1	25	Z2100QS-K			
	1	½	15		Z3050QS-E		
	2.7	½	15		Z3050QS-H		
	4.6	¾	20		Z3075QS-J		
	4.4	1	25		Z3100QS-J		
Press Fit	1.4*	½	15	Z2050QPF-F			
	5.9*	½	15	Z2050QPF-J			
	9.8*	¾	20	Z2075QPF-K			
	8.2*	1	25	Z2100QPF-K			
	1	½	15		Z3050QPF-E		
	2.7	½	15		Z3050QPF-H		
	4.6	¾	20		Z3075QPF-J		
	4.4	1	25		Z3100QPF-J		

*Maximum flow. Max value can be field adjusted, see actuator instructions.
Order "X" model Actuators for Factory Clip Setting, see Instruction Manual for details.

	Clip Position for Flow Adjustment											No Clip
	1	2	3-	3	4	4+	5	5+	6	N	No end stop	
Z2050Q(S)(PF)-F (½")	0.1	N/A	0.2	N/A	N/A	0.4	N/A	0.6	0.8	1.2	1.4	
Z2050Q(S)(PF)-J (½")	0.5	0.7	N/A	1.2	1.7	N/A	2.4	N/A	3.4	4.8	5.9	
Z2075Q(S)(PF)-K (¾")	0.5	1.0	N/A	1.5	2.3	N/A	3.3	N/A	4.6	6.6	9.8	
Z2100Q(S)(PF)-K (1")	0.5	0.9	N/A	1.5	2.2	N/A	3.1	N/A	4.3	6	8.2	

Teflon® is a registered trademark of DuPont™

**If temperature exceeds 212°F [100°C] operating range due to a boiler control failure the valve will safely contain the hot water but manufacturer's product warranty becomes invalid.



MODE OF OPERATION

The ZoneTight Zone Valve (QCV) is operated by a rotary actuator. The actuators are controlled by a standard voltage for on/off control, a modulating signal, or floating point control system which moves the ball of the valve to the position dictated by the control system.

PRODUCT FEATURES

The equal percentage characteristic of the flow is ensured by the design of the ball. This characteristic provides linear heating or cooling output from the coil improving energy efficiency and comfort.

ACTUATOR SPECIFICATIONS

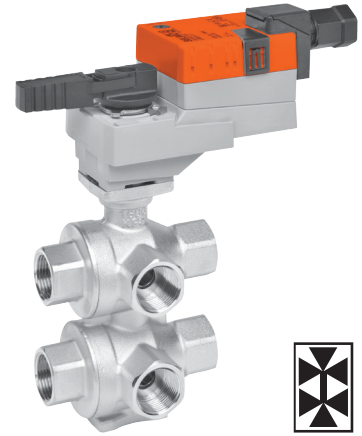
Control type	
-3	on/off, floating point
-SR	modulating, 2...10 V
Blank	on/off
Manual override	use actuator to turn valve stem
Electrical connection	3 ft. [1 m] cable with ½" conduit fitting, screw terminals
Power consumption	
CQ..	0.3 W running, 0.2 W holding
CQK..	2.5 W running, 0.5 W holding
CQ..UP	1.0 W running, 0.7 W holding
CQK..UP	3.0 W running, 0.5 W holding
Power supply	AC/DC 24 V (AC 110...240 V, UP)
Power consumption	
CQ..	0.6 VA
CQK..	5 VA
CQ..UP	2 VA
CQK..UP	7 VA

VALVE SPECIFICATIONS

Fluid	chilled or hot water, up to 60% glycol max
Flow characteristic	equal percentage (2-way), linear (3-way)
Controllable flow range	75° (2-way), 90° (3-way)
Sizes	½", ¾", 1"
End fitting	NPT female, sweat, press fit
Materials	
Body	forged brass
Ball	chrome plated brass
Stem	brass
Seats	Teflon® PTFE
O-rings	EPDM (lubricated)
Fluid temp range	36...212°F [2...100°C]**
Fluid temp limit	250°F [120°C]**
Max. allowable operating temp.	212°F [100°C]**
Body pressure rating	360 psi (NPT), 250 psi (press fit)
Close-off pressure	75 psid (2-way), 40 psid (3-way)
Max. differential pressure (ΔP)	40 psid
Leakage	0%

Y_10003 - 04/22 - Subject to change. © Belimo Aircontrols (USA), Inc.

6-Way Characterized Control Valve (CCV) Product Range



Linear Characteristic

MODE OF OPERATION

The 6-way CCV has the functionality of four 2-way control valves, and each sequence is controlled individually by the electronic actuator's rotary movement. The valve is bubble-tight in the closed position preventing energy losses and helps reduce operating costs.

PRODUCT FEATURES

One valve performs changeover and modulating control for a single coil in a 4 pipe system. True close-off to isolate both heating and cooling loops.

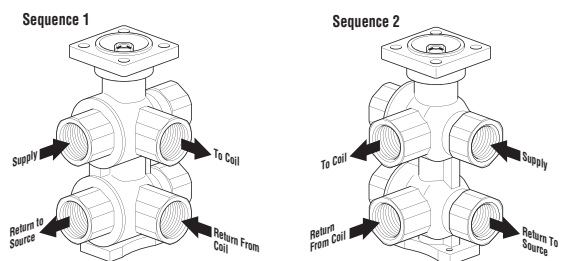
ACTUATOR SPECIFICATIONS

Control type	2...10 V, multi-function technology (MFT)
Manual override	LR..
Electrical connection	3 ft. [1 m] cable with ½" conduit fitting

VALVE SPECIFICATIONS

Fluid	chilled or hot water, up to 60% glycol max
Flow characteristic	linear
Controllable flow range	
Sequence 1	0...30° angle
Dead zone	30...60°
Sequence 2	60...90° angle
Sizes	½", ¾", 1"
End fitting	NPT
Materials	
Body	nickel plated brass
Ball	chrome plated brass
Stem	nickel plated brass
Seats	Teflon® PTFE
Seat o-rings	EPDM
Characterizing disc	chrome plated steel
Stem o-rings	EPDM
Fluid temp range	43...180°F [6...82°C]
Body pressure rating	232 psi
Close-off pressure	50 psid
Maximum differential pressure (ΔP)	15 psid
Leakage	0%

Teflon® is a registered trademark of DuPont™



		Valve Nominal Size		Type	Suitable Actuators
Sequence 1 Cv	Sequence 2 Cv	Inches	DN [mm]	6-way NPT	Non Fail-Safe
0.29	0.29	½	15	B315-029-029	
0.29	0.46	½	15	B315-029-046	
0.29	0.73	½	15	B315-029-073	
0.29	1.16	½	15	B315-029-116	
0.29	1.50	½	15	B315-029-150	
0.46	0.29	½	15	B315-046-029	
0.46	0.46	½	15	B315-046-046	
0.46	0.73	½	15	B315-046-073	
0.46	1.16	½	15	B315-046-116	
0.46	1.50	½	15	B315-046-150	
0.73	0.29	½	15	B315-073-029	
0.73	0.46	½	15	B315-073-046	
0.73	0.73	½	15	B315-073-073	
0.73	1.16	½	15	B315-073-116	
0.73	1.50	½	15	B315-073-150	
1.16	0.29	½	15	B315-116-029	
1.16	0.46	½	15	B315-116-046	
1.16	0.73	½	15	B315-116-073	
1.16	1.16	½	15	B315-116-116	
1.16	1.50	½	15	B315-116-150	
1.50	0.29	½	15	B315-150-029	
1.50	0.46	½	15	B315-150-046	
1.50	0.73	½	15	B315-150-073	
1.50	1.16	½	15	B315-150-116	
1.50	1.50	½	15	B315-150-150	
1.75	2.0	½	15	B315-175-200	
2.0	1.75	½	15	B315-200-175	
2.0	2.0	½	15	B315-200-200	
0.73	0.73	¾	20	B320-073-073	
0.73	1.16	¾	20	B320-073-116	
0.73	1.86	¾	20	B320-073-186	
0.73	2.9	¾	20	B320-073-290	
1.16	0.73	¾	20	B320-116-073	
1.16	1.16	¾	20	B320-116-116	
1.16	1.86	¾	20	B320-116-186	
1.16	2.9	¾	20	B320-116-290	
1.86	0.73	¾	20	B320-186-073	
1.86	1.16	¾	20	B320-186-116	
1.86	1.86	¾	20	B320-186-186	
1.86	2.9	¾	20	B320-186-290	
2.9	0.73	¾	20	B320-290-073	
2.9	1.16	¾	20	B320-290-116	
2.9	1.86	¾	20	B320-290-186	
2.9	2.9	¾	20	B320-290-290	
2.9	4.0	¾	20	B320-290-400	
2.9	4.7	¾	20	B320-290-470	
4.0	2.9	¾	20	B320-400-290	
4.0	4.0	¾	20	B320-400-400	
4.0	4.7	¾	20	B320-400-470	
4.9	2.9	¾	20	B320-490-290	
4.9	4.0	¾	20	B320-490-400	
4.9	4.7	¾	20	B320-490-470	
7.4	7	1	25	B325-740-700	

LRB24-SR

LRX24-MFT

NRB24-SR

NRX24-MFT

Characterized Control Valve (CCV) Product Range

Valve Nominal Size			Type		Suitable Actuators						
Cv	Inches	DN [mm]	2-way NPT	3-way NPT	Non Fail-Safe	NEMA 4X	Fail-Safe	NEMA 4X	Internet Protocol		
0.3	½	15	B207(B)	B307(B)	TR Series	LR Series	NR Series	TFR Series	LF Series	LR.-IP	
0.46	½	15	B208(B)	B308(B)							
0.8	½	15	B209(B)	B309(B)							
1.2	½	15	B210(B)	B310(B)							
1.9	½	15	B211(B)	B311(B)							
3	½	15	B212(B)	B312(B)							
4.7	½	15	B213(B)	B313(B)							
7.4	½	15	B214(B)								
10	½	15	B215(B)	B315(B)							
16	½	15	B216(B)*	B316(B)*							
4.7	¾	20	B217(B)	B317(B)							
7.4	¾	20	B218(B)	B318(B)							
10	¾	20	B219(B)								
14	¾	20	B220(B)*								
14	¾	20		B320(B)							
24	¾	20	B221(B)*	B321(B)*							
7.4	1	25	B222	B322							
10	1	25	B223	B323							
19	1	25	B224								
30	1	25	B225*	B325*							
10	1¼	32	B229								
19	1¼	32	B230*								
10	1¼	32		B329							
19	1¼	32		B330							
25	1¼	32	B231	B331							
37	1¼	32	B232*								
19	1½	40	B238	B338							
29	1½	40	B239	B339							
37	1½	40	B240*	B340							
46	1½	40		B341							
29	2	50	B248	B347							
37	2	50		B348							
46	2	50	B249	B349							
57	2	50	B250*	B350							
65	2	50	B251								
68	2	50		B351							
83	2	50		B352							
85	2	50	B252								
120	2	50	B253								
240	2	50	B254*								
					AR Series	AR Series	AFR Series	AFR Series	AR.-IP	AKR.-IP	AFR.-IP

* Models without characterizing discs. (B) Models with chrome plated brass ball and nickel plated brass stem



MODE OF OPERATION

The Characterized Control Valve is operated by a rotary actuator. The actuators are controlled by a standard voltage for on/off control, a modulating signal, or floating point control system which move the ball of the valve to the position dictated by the control system.

PRODUCT FEATURES

The equal-percentage characteristic of the flow is ensured by the integral characterizing disc. This characteristic provides linear heating or cooling output from the coil improving energy efficiency and comfort..

ACTUATOR SPECIFICATIONS

Control type	on/off, floating point, 2...10 V, multi-function technology (MFT)
Manual override	LR..
Electrical connection	3 ft. [1 m] cable with ½" conduit fitting or covered screw terminal strip

VALVE SPECIFICATIONS

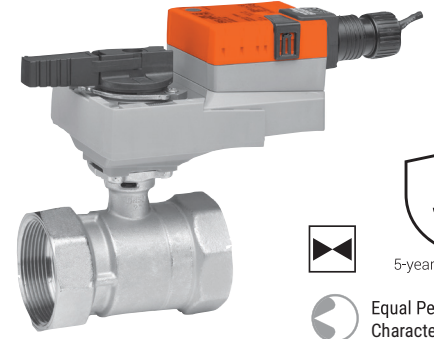
Fluid	chilled or hot water, up to 60% glycol max
Flow characteristic	A-port equal percentage B-port modified for constant common port flow
Controllable flow range	75°
Sizes	½", ¾", 1", 1¼", 1½", 2"
End fitting	NPT female
Materials	
Body	nickel plated brass
Ball	chrome plated brass
Stem	nickel plated brass
Seats	Teflon® PTFE
Seat o-rings	EPDM
Characterizing disc	chrome plated steel
½...1½" (2-way)	Tefzel®
½...1" (3-way)	Tefzel®
2" (2-way) B248...B249	Tefzel®
2" (2-way) B251...B253	stainless steel
1¼...2" (3-way)	stainless steel
Stem o-rings	EPDM
Fluid temp range	0...250°F [-18...+120°C]
Body pressure rating	
2-way	
All ½", ¾", 1"	600 psi
1¼" up to B230	600 psi
1¼" from B231	400 psi
1½...2"	400 psi
3-way	
All ½", ¾", 1"	600 psi
1½...2"	400 psi
Close-off pressure	200 psid
Maximum differential pressure (ΔP)	50 psid
Leakage	0% for A to AB, <2.0% for B to AB
Cv rating	B port: 70% of A to AB Cv
Tefzel® and Teflon® are registered trademarks of DuPont™	

Y_10003 - 04/22 - Subject to change. © Belimo Aircontrols (USA), Inc.

Characterized Control Valve (CCV) Product Range

C _v	Valve Nominal Size		Type	Suitable Actuators						
	Inches	DN [mm]	2-way NPT	Non Fail-Safe	NEMA 4X	Fail-Safe	NEMA 4X	Internet Protocol		
60	2½	65	B261	AR Series	AR Series	AFR Series	AFR Series	AR...-IP	AKR...-IP	AFR...-IP
75	2½	65	B262							
110	2½	65	B263							
150	2½	65	B264							
210	2½	65	B265*							
70	3	80	B277							
130	3	80	B278							
170	3	80	B280*							

* Models without characterizing disc



5-year warranty



Equal Percentage Characteristic

MODE OF OPERATION

The Characterized Control Valve is operated by a rotary actuator. The actuators are controlled by a standard voltage for on/off control, a modulating signal, or floating point control system which move the ball of the valve to the position dictated by the control system.

PRODUCT FEATURES

The equal-percentage characteristic of the flow is ensured by the integral characterizing disc. This characteristic provides linear heating or cooling output from the coil improving energy efficiency and comfort.

ACTUATOR SPECIFICATIONS

Control type	on/off, floating point, 2...10 V, multi-function technology (MFT)
Manual override	AR and AFR series
Electrical connection	3 ft. [1 m] cable with ½" conduit fitting or covered screw terminal strip

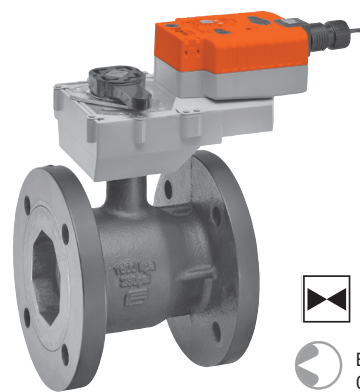
VALVE SPECIFICATIONS

Fluid	chilled or hot water, up to 60% glycol max
Flow characteristic	A-port equal percentage
Controllable flow range	75°
Sizes	2½", 3"
End fitting	NPT female
Materials	
Body	forged brass, nickel plated
Ball	stainless steel
Stem	stainless steel
Seats	Teflon® PTFE
Seat o-rings	EPDM
Characterizing disc	Tefzel®
Stem o-rings	EPDM
Fluid temp range	0...212°F [-18...+100°C]
Body pressure rating	400 psi
Close-off pressure	100 psid
Maximum differential pressure (ΔP)	30 psid
Leakage	0% for A to AB

Tefzel® and Teflon® are registered trademarks of DuPont™

Characterized Control Valve (CCV) Product Range

C _v	Valve Nominal Size		2-way Flanged		Suitable Actuators						
	Inches	DN [mm]	ANSI 125	ANSI 250	Non Fail-Safe	NEMA 4X	Fail-Safe	NEMA 4X	Internet Protocol		
70	2½	65	B6250S-070	B6250S-070-250	AR	AR	AFR	AFR	AR..-IP	AFR..-IP	AKR..-IP
110	2½	65	B6250S-110	B6250S-110-250							
110	3	80	B6300S-110	B6300S-110-250							
186	4	100	B6400S-186	B6400S-186-250	GR		GKR	GR / GKR			
290	5	125	B6500S-290	B6500S-290-250							
400	6	150	B6600S-400	B6600S-400-250							



MODE OF OPERATION

The Characterized Control Valve is operated by a rotary actuator. The actuators are controlled by a standard voltage for on/off control, a modulating signal, or floating point control system which move the ball of the valve to the position dictated by the control system.

PRODUCT FEATURES

The equal-percentage characteristic of the flow is ensured by the integral characterizing disc. This characteristic provides linear heating or cooling output from the coil improving energy efficiency and comfort.

ACTUATOR SPECIFICATIONS

Control type	on/off, floating point, 2...10 V, multi-function technology (MFT)
Manual override	AR, GR, AFR and GKR series
Electrical connection	3 ft. [1 m] cable with ½" conduit fitting or covered screw terminal strip

VALVE SPECIFICATIONS

Fluid	chilled or hot water, up to 60% glycol max
Flow characteristic	A-port equal percentage
Controllable flow range	75°
Sizes	2½", 3", 4", 5", 6"
End fitting	ANSI Class 125 flange, flat face*, ANSI 250
Materials	
Body	cast iron GG25
Ball	stainless steel
Stem	stainless steel
Seats	Teflon® PTFE
Seat o-rings	EPDM rubber
Characterizing disc	stainless steel
Stem o-rings	EPDM
Fluid temp range	0...250°F [-18...+120°C]
Body pressure rating	ANSI 125, Class B, ANSI 250
Close-off pressure	175 psid, 310 psid (-250)
Maximum differential pressure (ΔP)	50 psid
Leakage	0% for A to AB

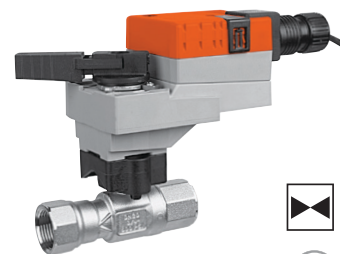
* 125 psi flanges have a plain flat face and should not be bolted to a raised face flange.

Teflon® is a registered trademark of DuPont™

Y_10003 - 04/22 - Subject to change. © Belimo Aircontrols (USA), Inc.

High Temperature Characterized Control Valve (HTCCV) Product Range

Valve Nominal Size			Type	Suitable Actuators	
C _v	Inches	DN [mm]	2-way NPT	Non Fail-Safe	Fail-Safe
0.29	½	15	B215HT029	TR Series	TFR Series
0.46	½	15	B215HT046		
0.73	½	15	B215HT073		
1.16	½	15	B215HT116		
1.86	½	15	B215HT186		
2.90	½	15	B215HT290		
4.55	½	15	B215HT455		
1.86	¾	20	B220HT186	LR Series	LF Series
2.90	¾	20	B220HT290		
4.64	¾	20	B220HT464		
7.31	¾	20	B220HT731		
9.28	¾	20	B220HT928		
13.20	¾	20	B220HT1320		
4.64	1	25	B225HT464		
7.31	1	25	B225HT731		
11.60	1	25	B225HT1160		
18.56	1	25	B225HT1856		
28.00	1	25	B225HT2800		



MODE OF OPERATION

The control valve is operated by an electronic actuator that responds to a standard voltage for on/off, modulating or floating point control system. The actuator will then move the ball of the valve to the position dictated by the control signal or voltage and change the flow.

PRODUCT FEATURES

Equal-percentage flow characteristic.

ACTUATOR SPECIFICATIONS

Control type	on/off, floating point, 2...10 V, multi-function technology (MFT)
Manual override	only TR, LR series
Electrical connection	3 ft. [1 m] cable with ½" conduit fitting or covered screw terminal strip

VALVE SPECIFICATIONS

Fluid	hot water, up to 60% glycol max, steam
Flow characteristic	A-port equal percentage
Controllable flow range	75°
Sizes	½", ¾", 1"
End fitting	NPT female
Materials	
Body	brass (DZR) P-CuZn35Pb2
Ball	stainless steel
Stem	stainless steel
Seat	ETFE
Stem packing	Viton®
Characterizing disc	ETFE
Seat o-rings	EPDM
Body pressure rating	600 psi
Fluid temperature range	
Steam	250°F [120°C]
Water	60...266°F [16...130°C]
Close-off pressure	200 psid
Maximum differential pressure (ΔP)	
Steam	15 psid
Water	60 psid partially open ball 116 psid full open only (B215HT455)
Maximum inlet pressure	
Steam	15 psi
Leakage	0%

Industrial Ball Valve Product Range

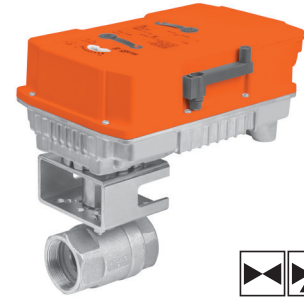
Valve Nominal Size			Type		Suitable Actuators				
C _v	Inches	DN [mm]	2-way NPT	3-way NPT	Non Fail-Safe		Fail-Safe		
1	½	15	B2050VS-01*		LM Series	GR Series	LF Series		
2	½	15	B2050VS-02*						
4	½	15	B2050VS-04*						
15	½	15	B2050VS-15*						
30	¾	20	B219VS					NM Series	NF Series
51	¾	20	B220VS						
43	1	25	B224VS						
68	1	25	B225VS					AM Series	AF Series
48	1¼	32	B232VS						
84	1½	40	B239VS					GM Series	PR Series
177	1½	40	B240VS						
108	2	50	B249VS						
15	½	15	B2050VSS-15*		LM Series	GR Series	LF Series		
30	¾	20	B219VSS**					NM Series	NF Series
43	1	25	B224VSS**						
108	2	50	B249VSS**					GM Series	PR Series
6.4	½	15	B315L***		LR Series	LF Series			
12.8	¾	20	B320L***						
11	1	25	B325L***						
34	1¼	32	B332L***		NR Series	AFR Series			
57	1½	40	B340L***						
87	2	50	B350L***		AR Series	AFR Series			

* For hot only or cold only applications. Not for temperature changeover applications.

** NSF/ANSI/CAN 61 Section 8, Annex G, NSF/ANSI 372 - Drinking Water System Components - Lead Content

*** Not for steam applications.

NOTE: Industrial ball valves (B2..VS, B2..VSS) have serviceable components. Proper maintenance of these parts will ensure a longer in-service life for the valves. The seats of these valves will require replacement at an interval consistent with number of full cycles the valve has been operated, or as field condition dictates.



2-year warranty

MODE OF OPERATION

The control valve is operated by an electronic actuator that responds to a standard voltage for on/off control, modulating, or floating point control system. The actuator will then move the ball of the valve to the position dictated by the control signal thus changing the flow.

PRODUCT FEATURES

Modified equal percentage of flow for B2. Modified linear flow for B3.

B3..L valves are for diverting applications and are not rated for steam.

ACTUATOR SPECIFICATIONS

Control type	on/off, floating point, modulating, 2...10 V, multi-function technology (MFT)
Manual override	LM, NM, GM, AM, GR, PR, AF, NF
Electrical connection	3 ft. [1 m] cable with ½" conduit fitting

VALVE SPECIFICATIONS

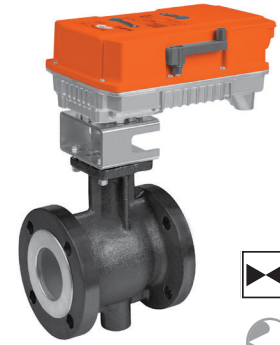
Fluid	chilled or hot water, up to 60% glycol max, steam (2-way)
Flow characteristic	modified equal percentage (B2), modified linear (B3..L)
Sizes	½", ¾", 1", 1¼", 1½", 2"
End fitting	FNPT
Materials	
Body	bronze (B2..VS) stainless steel (B2..VSS) nickel plated brass (B3..L)
Ball	stainless steel, bronze (B2050VSS-15) chrome plated brass (B3..L)
Stem	stainless steel, nickel plated brass (B3..L)
Seats	MPTFE, RPTFE (2-way, B2050) Teflon® PTFE (3-way)
Stem packing	MPTFE (2-way NPT)
O-rings	NPT EPDM (B3..L)
Fluid temp range	
B2..VS	-22...+280°F [-30...+138°C]
B2..VSS	-22...+298°F [-30...+148°C]
B3..L	0...250°F [-18...+120°C]
Body pressure rating	
3-way	600 psi DN 15...25 (B3..L ½...1") 400 psi DN 32...50 (B3..L 1¼...2")
Maximum inlet pressure	
Steam	35 psi (B2..VS) 50 psi (B2..VSS)
Leakage	ANSI Class VI (B2..VS, VSS) 0% (B3..L)

Y_10003 - 04/22 - Subject to change. © Belimo Aircontrols (USA), Inc.

V Ball Control Valve Product Range

C _v	Valve Nominal Size		Type		Non Fail-Safe	Fail-Safe	
	Inches	DN [mm]	2-way NPT	2-way Flanged		Spring Return	Electronic
024	1	25	B2100VB-024		AM Series	NF Series	AF
055	1½	40	B2150VB-055				
077	2	50	B2200VB-077				
207	3	80		B6300VB-207	PR Series	GK Series	PKR Series
350	4	100		B6400VB-350			
507	6	150		B6600VB-507			
865	8	200		B6800VB-865	SY Series		
1550	10	250		B61000VB-1550			
1905	12	300		B61200VB-1905			

NOTE: Industrial ball valves have serviceable components. Proper maintenance of these parts will ensure a longer in-service life for the valves. The seats of these valves will require replacement at an interval consistent with number of full cycles the valve has been operated, or as field condition dictates.



MODE OF OPERATION

The control valve is operated by an electronic actuator that responds to a standard voltage for on/off control, modulating, or floating point control system. The actuator will then move the ball of the valve to the position dictated by the control signal thus changing the flow.

PRODUCT FEATURES

Equal percentage of flow
300:1 rangeability
ANSI Leakage Class IV

ACTUATOR SPECIFICATIONS

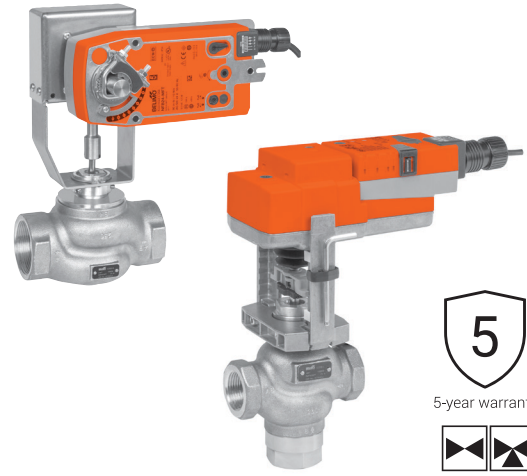
Control type	on/off, floating point, modulating 2...10 V, multi-function technology (MFT)
Manual override	all models
Electrical connection	3 ft. [1 m] cable with ½" conduit fitting, terminal block

VALVE SPECIFICATIONS

Fluid	chilled or hot water, up to 60% glycol max, steam
Flow characteristic	equal percentage
Sizes	1", 1½", 2", 3", 4", 6", 8", 10", 12"
End fitting	NPT female (1...2") ANSI flanged (3...12")
Materials	
Body	carbon steel
Characterizing ball	hardened chrome plated stainless steel
Stem	stainless steel
Seat	Teflon®
O-rings	ALFAS
Stem packing	spring loaded Teflon® V-ring
Bushings	Stanyl PA46
Body pressure rating	NPT ANSI 300 (1...2") flanged ANSI 150 (3...12")
Fluid temperature range	380°F max.
Close-off pressure	
Water	250 psid
Steam	150 psid
Maximum inlet pressure	
Steam	150 psi
Leakage	ANSI Class IV

Globe Valve Product Range

Valve Nominal Size			Type		Suitable Actuators		
Cv	Inches	DN [mm]	2-way NPT	3-way NPT	Non Fail-Safe	Fail-Safe	
						Spring Return	Electronic
0.4	½	15	G215B-C		LV Series	LF Series	LVK Series
0.4	½	15	G215S-C				
1.3	½	15	G215B-F				
1.3	½	15	G215S-F				
2.2	½	15	G215B-G				
2.2	½	15	G215S-G				
4.4	½	15	G215B-J				
4.4	½	15	G215S-J				
5.5	¾	20	G220B-J				
5.5	¾	20	G220S-J				
7.5	¾	20	G220B-K				
7.5	¾	20	G220S-K				
10	1	25	G225B-K				
10	1	25	G225S-K				
14	1	25	G225B-L				
14	1	25	G225S-L				
20	1¼	32	G232B-M				
20	1¼	32	G232S-M				
28	1½	40	G240B-N				
28	1½	40	G240S-N				
40	2	50	G250B-N				
40	2	50	G250S-N				
2.2	½	15		G315B-G	SV Series	NF Series	SVK Series
4.4	½	15		G315B-J			
6.75	¾	20		G320B-K			
14	1	25		G325B-L			
20	1¼	32		G332B-M			
28	1½	40		G340B-N			
40	2	50		G350B-N			
						AF Series	



5-year warranty



MODE OF OPERATION

The control valve is operated by an electronic actuator that responds to a standard voltage for on/off control, modulating, floating point control system. The actuator will then move the plug of the valve to the position dictated by the control signal thus changing the flow.

PRODUCT FEATURES

New G2 and G3 globe valves offer a modified equal percentage flow characteristic for a wide variety of HVAC applications. Capable of being used for heating, cooling, and steam service. Repack kits are available to extend the life of the valve without full replacement.

ACTUATOR SPECIFICATIONS

Control type	on/off, floating point, 2...10 V, multi-function technology (MFT)
Manual override	all models except LF
Electrical connection	3 ft. [1 m] cable with ½" conduit fitting

VALVE SPECIFICATIONS

Fluid	chilled or hot water, up to 60% glycol max, steam
Flow characteristic	modified equal percentage, G3: linear flow from B to AB
Sizes	½", ¾", 1", 1¼", 1½", 2"
End fitting	NPT female
Materials	
Body	bronze
Stem	stainless steel
Plug	G2B, G3B: brass G2S: stainless steel
Seat	G2B, G3B: bronze G2S: stainless steel
Stem packing	EPDM o-ring
Fluid temp range	G2B, G3B: 20...280°F [-7...+138°C] G2S: 20...338°F [-7...+170°C]
Body pressure rating	ANSI Class 250
Maximum inlet pressure	
Steam	G2B: 35 psi [241 kPa] G2S: 100 psi [690 kPa]
Maximum differential pressure (ΔP)	G2B: 35 psid [241 kPa] G2S: 50 psid [345 kPa]
Leakage	ANSI Class VI
Rangeability	100:1

Y_10003 - 04/22 - Subject to change. © Belimo Aircontrols (USA), Inc.

Globe Valve, 2-way Product Range



5-year warranty



Valve Nominal Size			Type	Suitable Actuators		
C _v	Inches	DN [mm]	2-way Flanged	Non Fail-Safe	Fail-Safe	
					Spring Return	Electronic
65	2½	65	G665C	EV Series	AF Series	AVK Series
65	2½	65	G665CS			
65	2½	65	G665C-250			
65	2½	65	G665CS-250			
65	2½	65	G665LCS			
90	3	80	G680C			
90	3	80	G680CS			
90	3	80	G680C-250			
90	3	80	G680CS-250			
90	3	80	G680LCS			
170	4	100	G6100C			
170	4	100	G6100CS			
170	4	100	G6100C-250			
170	4	100	G6100CS-250			
170	4	100	G6100LCS			
263	5	125	G6125C			
263	5	125	G6125CS			
263	5	125	G6125C-250			
263	5	125	G6125CS-250			
263	5	125	G6125LCS			
344	6	150	G6150C			
344	6	150	G6150CS			
344	6	150	G6150C-250			
344	6	150	G6150CS-250			
344	6	150	G6150LCS			

The G...(C)(CS)(LCS) Series valve is a pressure compensated valve that allows high close-off ratings while utilizing standard actuation.

MODE OF OPERATION

The control valve is operated by an electronic actuator that responds to a standard voltage for on/off control, modulating, or floating point control system. The actuator will then move the plug of the valve to the position dictated by the control signal thus changing the flow.

PRODUCT FEATURES

Equal percentage and linear flow curve options available for a wide variety of HVAC applications. Capable of being used for heating, cooling, and steam service. Repack and rebuild kits are available to extend the life of the valve without full replacement.

ACTUATOR SPECIFICATIONS

Control type	on/off, floating point, 2...10 V, multi-function technology (MFT)
Manual override	all models
Electrical connection	3 ft. [1 m] cable with ½" conduit fitting

VALVE SPECIFICATIONS

Fluid	chilled or hot water, up to 60% glycol max, steam
Flow characteristic	G6 A-port equal percentage G6LCS linear
Sizes	2½", 3", 4", 5", 6"
End fitting	ANSI flanged
Materials	
Body	cast iron
Stem	stainless steel
Plug	
G6	bronze
G6S	stainless steel
Seat	stainless steel
Stem packing	
G6	bronze trimmed: NLP (EPDM)
G6S	stainless trimmed: NLP (EPDM)
Body pressure rating	
G6, 125# ANSI flange	125 psi
G6, 250# ANSI flange	250 psi
Fluid temperature range	refer to valve specification pages in the Product Guide and Price List
Maximum inlet pressure	
Water	150 psi [1034 kPa] G6C, G6CS 250 psi [1724 kPa] G6C..250, G6CS..250
Steam	35 psi [241 kPa] G6C, G6C..250 100 psi [690 kPa] G6CS, G6CS..250
Max. differential pressure (ΔP)	
Water	25 psi [172 kPa] G6C, G6C..250 50 psi [345 kPa] G6CS, G6CS..250
Steam	15 psid [103 kPa] G6C, G6C..250
Rangeability	85:1 (G665..), 91:1 (G680..) 98:1 (G6100..), 100:1 (G6125..) 98:1 (G6150..)

Globe Valve, 3-way Product Range

Valve Nominal Size			Type	Suitable Actuators		
C _v	Inches	DN [mm]	3-Way Flanged	Non Fail-Safe	Fail-Safe	
					Spring Return	Electronic
68	2½	65	G765	EV / RV Series	AF Series	AVK Series
68	2½	65	G765S			
68	2½	65	G765-250			
68	2½	65	G765S-250			
85	3	80	G780			
85	3	80	G780S			
85	3	80	G780-250			
85	3	80	G780S-250			
190	4	100	G7100			
190	4	100	G7100S			
190	4	100	G7100-250	RV Series	AF Series	GK Series
190	4	100	G7100S-250			
280	5	125	G7125			
280	5	125	G7125S			
280	5	125	G7125-250			
280	5	125	G7125S-250			
340	6	150	G7150			
340	6	150	G7150S			
340	6	150	G7150-250			
340	6	150	G7150S-250			
68	2½	65	G765D	EV Series	AF Series	AVK Series
68	2½	65	G765DS			
68	2½	65	G765DS-250			
85	3	80	G780D			
85	3	80	G780DS			
85	3	80	G780DS-250			
154	4	100	G7100D			
154	4	100	G7100DS			
154	4	100	G7100DS-250			
195	5	125	G7125D			
195	5	125	G7125DS			
195	5	125	G7125DS-250			
248	6	150	G7150D			
248	6	150	G7150DS			
248	6	150	G7150DS-250			



5-year warranty

MODE OF OPERATION

The control valve is operated by an electronic actuator that responds to a standard voltage for on/off control, modulating, or floating point control system. The actuator will then move the plug of the valve to the position dictated by the control signal thus changing the flow.

PRODUCT FEATURES

Equal percentage (G6) and linear (G7) flow curve options available for a wide variety of HVAC applications. Capable of being used for heating, cooling, and steam service. Repack and rebuild kits are available to extend the life of the valve without full replacement.

ACTUATOR SPECIFICATIONS

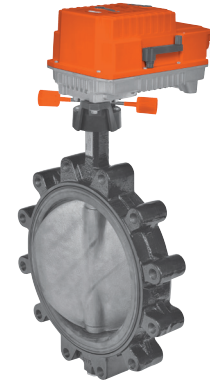
Control type	on/off, floating point, 2...10 V, multi-function technology (MFT)
Manual override	all models
Electrical connection	3 ft. [1 m] cable with ½" conduit fitting

VALVE SPECIFICATIONS

Fluid	chilled or hot water, up to 60% glycol max
Flow characteristic	linear
Sizes	2½", 3", 4", 5", 6"
End fitting	ANSI flanged
Materials	
Body	cast iron
Stem	stainless steel
Plug	
G7	bronze
G7S	stainless steel
Seat	stainless steel
Stem packing	
G7	bronze trimmed: NLP (EPDM)
G7S	stainless trimmed: NLP (EPDM)
Body pressure rating	
G7, 125# ANSI flange	125 psi
G7, 250# ANSI flange	250 psi
Fluid temperature range	refer to valve specification pages in the Product Guide and Price List
Maximum inlet pressure	
Water	150 psi [1034 kPa] G7, G7S 250 psi [1724 kPa] G7..250, G7S..250
Max. differential pressure (ΔP)	
Water	25 psid [172 kPa] G7, G7..250 50 psid [345 kPa] G7S, G7S..250
Rangeability	50:1

Y_10003 - 04/22 - Subject to change. © Belimo Aircontrols (USA), Inc.

Resilient Seat Butterfly Valve Product Range



5-year warranty



2-way				Suitable Actuators								
Valve Nominal Size				Type	Non Fail-Safe				Fail-Safe			
C _v 90°	C _v 60°	IN	DN [mm]		HDU LU	L	HD		Spring Return	Electronic		
115	44	2	50	F650								
196	75	2½	65	F665			AR					
302	116	3	80	F680	AR GR			GR Series				
600	230	4	100	F6100	GR							
1022	392	5	125	F6125	GR		DR					
1579	605	6	150	F6150	DR							
3136	1202	8	200	F6200	PR							
5340	2047	10	250	F6250		PR						
8250	3162	12	300	F6300								
11917	4568	14	350	F6350								
16388	6282	16	400	F6400								
21705	8320	18	450	F6450								
27908	10698	20	500	F6500								
43116	16528	24	600	F6600								

MODE OF OPERATION

Butterfly valves are capable of handling higher flow rates with relatively low pressure loss. These valves may be used for isolation (shut-off) service or throttling service within a range of 0...60 degrees for two-way valves. Butterfly valves are controlled with a maintenance-free electronic actuator or manually with an ergonomic handle or gear operator.

PRODUCT FEATURES

The unique disc and seat design ensures positive valve seating while maintaining low seating torque.

ACTUATOR SPECIFICATIONS

Control type	on/off, floating point, modulating, 2...10 V, multi-function technology (MFT)
Manual override	all models
Electrical connection	3 ft. [1 m] cable terminal block (-T models)
Communication (PR)	BACnet MS/TP, NFC, listed by BTL, Modbus

VALVE SPECIFICATIONS

Fluid	chilled, hot water, up to 60% glycol max
Flow characteristic	F6 modified equal percentage F7 modified linear
Sizes	2...24"
End fitting	for ASME/ANSI Class 125/150 flanges
Materials	
Body	ductile iron ASTM A536
Body finish	polyester powder coat
Disc	304 stainless steel
Shaft	
HD series	420 stainless steel, 630 stainless steel (14...24")
L series	420 stainless steel
Seat	EPDM
O-rings	EPDM
Bushings	
HD series	RPTFE
L series	bronze, steel, PTFE
Body pressure rating	232 psi cold working pressure (CWP)
Fluid (water) temperature range	-22...+250°F [-30...+120°C]
Close-off pressure	
HDU, LU series	50 psid, 3...10"
HD series	200 psid, 2...6", 150 psid 14...24"
L series	200 psid, 8...12"
Rangeability	10:1
Maximum velocity	12 FPS
Leakage	0%

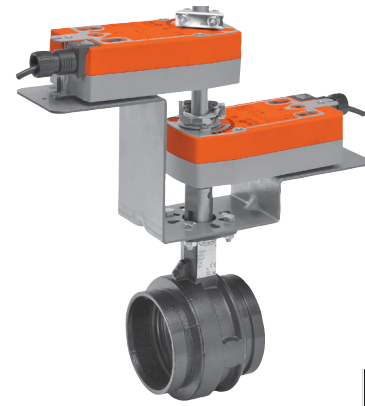
Y_10003 - 04/22 - Subject to change. © Belimo Aircontrols (USA), Inc.

3-way				Suitable Actuators								
Valve Nominal Size				Type	Non Fail-Safe				Fail-Safe			
C _v 90°	C _v 60°	IN	DN [mm]		3-way	HDU	L	HD		Spring Return	Electronic	
115	44	2	50	F750								
196	75	2½	65	F765								
302	116	3	80	F780				AM				
600	230	4	100	F7100								
1022	392	5	125	F7125	GM Series							
1579	605	6	150	F7150								
3136	1202	8	200	F7200								
5340	2047	10	250	F7250		PR						
8250	3162	12	300	F7300								
11917	4568	14	350	F7350								
16388	6282	16	400	F7400								
21705	8320	18	450	F7450								

Grooved Butterfly Valve Product Range

2-way					Suitable Actuators			
Valve Nominal Size				Type	Non Fail-Safe		Fail-Safe	
C _v 90°	C _v 60°	IN	DN [mm]	2-way			Spring Return	Electronic
115	36	2	50	F650VIC	AM Series	GR Series	AF Series	GK
260	80	2½	65	F665VIC				
440	140	3	80	F680VIC				
820	250	4	100	F6100VIC		DR Series	PKR Series	
1200	370	5	125	F6125VIC				
1800	560	6	150	F6150VIC		PR Series	PKR Series	
3400	1050	8	200	F6200VIC				
5800	1800	10	250	F6250VIC				
9000	2790	12	300	F6300VIC		SY Series (2 Year Warranty)		

3-way					Suitable Actuators			
Valve Nominal Size				Type	Non Fail-Safe		Fail-Safe	
C _v 90°	C _v 60°	IN	DN [mm]	3-way			Spring Return	Electronic
115	36	2	50	F750VIC	GM Series	AF	GK Series	
260	80	2½	65	F765VIC				
440	140	3	80	F780VIC				
820	250	4	100	F7100VIC		PR Series	PKR Series	
1200	370	5	125	F7125VIC				
1800	560	6	150	F7150VIC		SY Series (2 Year Warranty)	PKR Series	
3400	1050	8	200	F7200VIC				
5800	1800	10	250	F7250VIC				
9000	2790	12	300	F7300VIC				



5-year warranty



MODE OF OPERATION

Grooved butterfly valves are designed for body pressures ranging from full vacuum to 300 psi and for bi-directional, dead end services to full body pressure. The valve patented seat design ensures full 360° sealing. The pressure enhanced seat compresses to form a larger seating area as the pressure increases. Valve construction and performance meet and exceed MSS-SP-67 requirements.

PRODUCT FEATURES

The unique single offset disc and seat design ensures positive valve seating while maintaining low seating torque.

ACTUATOR SPECIFICATIONS

Control type	on/off, floating point, modulating, 2...10 V, multi-function technology (MFT)
Manual override	all models
Electrical connection	3 ft. [1 m] cable terminal block (-T models)
Communication (PR)	BACnet MS/TP, NFC, (BTL certified), Modbus

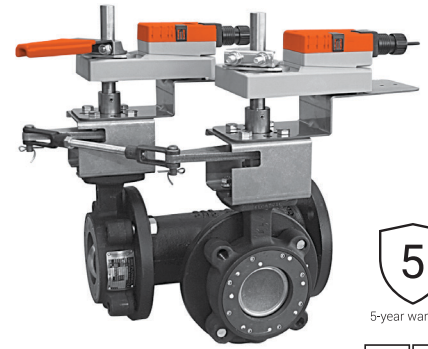
VALVE SPECIFICATIONS

Fluid	chilled, hot water, up to 60% glycol max
Flow characteristic	F6 modified equal percentage F7 modified linear
Sizes	2...12"
End fitting	grooved ANSI/AWWA (C606)
Materials*	
Body	ductile iron ASTM A536, grade 65-45-12
Body finish	black powder coating
Disc	electrolysis nickel coated ductile iron
Shaft	416 stainless steel
Seat	EPDM
Bearings	fiberglass with TFE lining
Body pressure rating	300 psi
Fluid temperature range	-22...+230°F [-30...+110°C]
Close-off pressure	200 psid (for most combinations)
Rangeability	100:1
Maximum velocity	20 FPS
Leakage	0%

*VIC-300™ Masterseal™ is manufactured by the Victaulic Company.

Note: Valves rated for dead end service.

High Performance Butterfly Valve Product Range



2-way Valves					Suitable Actuators						
Valve Nominal Size		IN	Type		Non Fail-Safe		Fail-Safe				
C _v 90°	C _v 60°		ANSI 150 2-way	ANSI 300 2-way	150	300	Spring Return		Electronic		
							150	300	150	300	
102	56	2	F650-150SHP	F650-300SHP	GM Series	PR Series	GM Series	PR Series	AF Series	AF Series	GK Series
146	80	2½	F665-150SHP	F665-300SHP							
228	125	3	F680-150SHP	F680-300SHP							
451	248	4	F6100-150SHP	F6100-300SHP							
714	392	5	F6125-150SHP	F6125-300SHP							
1103	607	6	F6150-150SHP	F6150-300SHP							
2064	1135	8	F6200-150SHP	F6200-300SHP							
3517	1934	10	F6250-150SHP	F6250-300SHP							
4837	2660	12	F6300-150SHP	F6300-300SHP							
6857	3592	14*	F6350-150SHP	F6350-300SHP							
9287	4865	16*	F6400-150SHP		SY (2 Year Warranty)	SY (2 Year Warranty)	PKR Series	GK Series	PKR Series		
11400	6270	18*	F6450-150SHP								
14420	7590	20*	F6500-150SHP								
22050	11550	24*	F6600-150SHP								

Note: C_v values listed for ANSI Class 150 Butterfly Valves. Please consult the technical documentation for ANSI Class 300 C_v values and configurations.

*Call Customer Service at 1-800-543-9038 for product availability. Longer lead times may apply.

MODE OF OPERATION

High performance butterfly valves are designed for modulating and isolation service and feature a machined seat design and blow out proof solid shaft, providing better torque consistency, which offers longer actuator life and reduced risk of leakage. Available for a variety of high temperature and pressure ratings i.e., ASME/ANSI Class 300 or 150. Valve sizes range from 2...24 inches, with rangeabilities of 100:1, 0% leakage ratings, and a maximum valve velocity of 32 FPS.

PRODUCT FEATURES

Unique body seat and double offset disc design ensures positive valve sealing to help assure leak free performance in water applications while maintaining low seating torque.

ACTUATOR SPECIFICATIONS

Control type	on/off, floating point, modulating, 2...10 V, multi-function technology (MFT)
Manual override	all models
Electrical connection	3 ft. [1 m] cable terminal block (-T models)
Communication (PR)	BACnet MS/TP, NFC, (BTL certified), Modbus

VALVE SPECIFICATIONS

Fluid	chilled or hot water, up to 60% glycol max, steam to 50 psi
Flow characteristic	F6 modified equal percentage, unidirectional F7 modified linear, unidirectional
Sizes	2...24"
End fitting	ASME/ANSI Class 150 or 300
Materials	
Body	carbon steel full lug
Disc	316 stainless steel
Shaft	17-4 PH stainless
Seat	RTFE
Gland Seal	TFE
Bearings	glass backed PTFE
Body pressure rating	150 SHP: ASME/ANSI Class 150 300 SHP: ASME/ANSI Class 300
Fluid temperature range	-22...+400°F [-30...+204°C]
Close-off pressure	150 SHP: 285 psid 300 SHP: 600 psid max.
Rangeability	100:1
Maximum velocity	32 FPS
Leakage	0%

3-way Valves					Suitable Actuators					
Valve Nominal Size		Inches	Type		Non Fail-Safe		Electronic Fail-Safe			
C _v 90°	C _v 60°		ANSI 150 3-way	ANSI 300 3-way	150	300	150	300	150	300
102	56	2	F750-150SHP	F750-300SHP	GM Series	PR Series	GM Series	PR Series	GK Series	PK Series
146	80	2½	F765-150SHP	F765-300SHP						
228	125	3	F780-150SHP	F780-300SHP						
451	248	4	F7100-150SHP	F7100-300SHP						
714	392	5	F7125-150SHP	F7125-300SHP						
1103	607	6	F7150-150SHP	F7150-300SHP						
2064	1135	8	F7200-150SHP	F7200-300SHP						
3517	1934	10	F7250-150SHP	F7250-300SHP						
4837	2660	12	F7300-150SHP	F7300-300SHP						
6857	3592	14*	F7350-150SHP							

Note: C_v values listed for ANSI Class 150 Butterfly Valves. Please consult the technical documentation for ANSI Class 300 C_v values and configurations.

*Call Customer Service at 1-800-543-9038 for product availability. Longer lead times may apply.

Double Dead End Service: Utilizes larger retainer ring set screws to allow the valve to be placed at the end of the line without a down stream flange in either flow direction while still holding full pressure.

The SHP series are Flowseal® valves manufactured by the CRANE company.

Piping Package Product Range

Valve Nominal Size		Hoses	Union	Isolation Valve	Manual Balancing Valve	Strainer
Valve Series	Inches	DN [mm]	Lengths	Body End/ Tailpiece End	Body End/ Tailpiece End	Body End/ Tailpiece End
PIQCV 2-Way	½	15	12", 18", 24"	F-NPT, Sweat, Press Fit / M-NPT	F-NPT, Sweat, Press Fit / M-NPT	F-NPT, Sweat, Press Fit / M-NPT, Sweat
	¾	20	12", 18", 24"			
EPIV / EV 2-Way	½	15	12", 18", 24"			
	¾	20	12", 18", 24"			
	1	25	12", 18", 24"			
	1¼	32	18", 24", 36"			
	1½	40	18", 24", 36"			
CCV 2-Way	2	50	24", 36"			
	½	15	12", 18", 24"		F-NPT, Sweat, Press Fit / M-NPT	
	¾	20	12", 18", 24"			
	1	25	12", 18", 24"			
	1¼	32	18", 24", 36"			
1½	40	18", 24", 36"				
2	50	24", 36"				
CCV 3-Way	½	15	12", 18", 24"	F-NPT, Sweat, Press Fit / M-NPT		
	¾	20	12", 18", 24"			
	1	25	12", 18", 24"			
	1¼	32	18", 24", 36"			
	1½	40	18", 24", 36"			
QCV 2-Way	2	50	24", 36"	F-NPT, Sweat, Press Fit / M-NPT		
	½	15	12", 18", 24"			
	¾	20	12", 18", 24"			
Zone Valves 2-Way	1	25	12", 18", 24"	F-NPT, Sweat, Press Fit / M-NPT		
	½	15	12", 18", 24"			



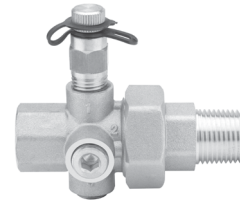
HOSE TECHNICAL SPECIFICATIONS

Operating & burst pressure rating

½"	375 psi operating, *400 psi <195°F [90°C] 1500 psi burst pressure
¾"	300 psi operating, *400 psi <195°F [90°C] 1200 psi burst pressure
1"	225 psi operating 900 psi burst pressure
1¼"	200 psi operating 800 psi burst pressure
1½"	175 psi operating 600 psi burst pressure
2"	150 psi operating 500 psi burst pressure

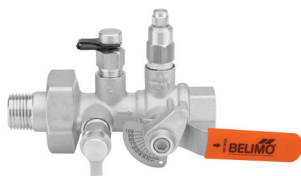
Component temperature -5...+230°F [-20...+110°C]
less than 41°F with use of glycol additive

Note: Fluid temperature may be limited by the hose rating



UNION TECHNICAL SPECIFICATIONS

Service	chilled or hot water, 60% glycol
Sizes	½", ¾", 1", 1¼", 1½", 2"
Pressure/temperature ratings	
½...2"	600 psi
Component temperature	250°F maximum



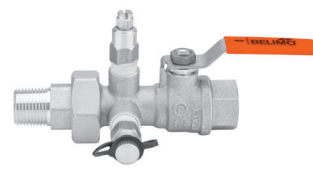
MANUAL BALANCE VALVE TECHNICAL SPECIFICATIONS

Service	chilled or hot water, 60% glycol
Sizes	½", ¾", 1", 1¼", 1½", 2"
Pressure/temperature ratings	
½...2"	400 psi
Component temperature	300°F maximum
Leakage	0%



STRAINER TECHNICAL SPECIFICATIONS




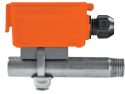


Service	chilled or hot water, 60% glycol
Sizes	½", ¾", 1", 1¼", 1½", 2"
Pressure/temperature ratings	
½...2"	600 psi
Component temperature	325°F maximum
Leakage	0%



ISOLATION VALVE TECHNICAL SPECIFICATIONS

Service	chilled or hot water, 60% glycol
Sizes	½", ¾", 1", 1¼", 1½", 2"
Pressure/temperature ratings	
½...¾"	600 psi
1...2"	500 psi
Component temperature	300°F maximum
Leakage	0%




Temperature Sensor Product Range

Application	Type Code	Output Signal			Operating Temperature Range	Probe Length	Application/Comment
		Passive	Active	Switch			
 Outdoor air	01UT	■			-31...+122°F [-35...+50°C]		- Housing rating: NEMA 4X, IP65
	22UT		■		-31...+122°F [-35...+50°C]	8	- Housing rating: NEMA 4X, IP65 - 8 selectable measuring ranges between: -30...+480°F [-30...+250°C] - Default measuring range: -30...+130°F
 Duct/pipe immersion	01DT	■			NTC: -58...+302°F [-50...+150°C] Ni, PT: -58...+320°F [-50...+160°C]	2" [50 mm] 4" [100 mm] 6" [150 mm] 8" [200 mm] 12" [300 mm] 18" [450 mm]	- Housing rating: NEMA 4X, IP65 - With thermowell: pipe immersion sensor - Without thermowell: duct immersion sensor
	22DT		■		-58...+302°F [-50...+150°C]	8	2" [50 mm] 4" [100 mm] 6" [150 mm] 8" [200 mm] 12" [300 mm] 18" [450 mm]
 Duct averaging	01MT	■			NTC: 32...122°F [0...50°C] Ni, PT: -31...+158°F [-35...+70°C]	10 ft [3 m] 20 ft [6 m]	- Housing rating: NEMA 4X, IP65
	22MT		■		-31...+158°F [-35...+70°C]	8	10 ft [3 m] 20 ft [6 m]
 Strap-on	01ST	■			-40...+302°F [-40...+150°C]		- Pipe strap-on temperature sensors for heating systems, 01ST without housing and 01HT, 22HT with housing
	01HT	■			-31...+194°F [-35...+90°C]		- Housing rating: NEMA 4X, IP65
	22HT		■		-31...+158°F [-35...+70°C]	8	- Housing rating: NEMA 4X, IP65 - 8 selectable measuring ranges between: -30...+480°F [-30...+250°C] - Default measuring range: 40...240°F
 Cable	01CT	■			-40...+302°F [-40...+150°C]	2" [50 mm] 4" [100 mm] 8" [200 mm]	- Two temperature rating variants
	22CT		■		-40...+302°F [-40...+150°C]	8	2" [50 mm]
 Low temperature detection	01DTS			■	-31...+158°F [-35...+70°C]	10 ft [3 m] 20 ft [6 m]	- Housing rating: NEMA 4X, IP65 - SPDT contact

Y_10003 - 04/22 - Subject to change. © Belimo Aircontrols (USA), Inc.


Humidity and Air Quality Sensor Product Range

Humidity

Application	Type Code	Output Signal				Measured Values	Measurement Range			Application/Comment
		Active	Modbus RTU	BACnet MS/TP	Switch		Humidity	Temperature (Factory Settings)	Multirange (Selectable)	
 Outdoor	22UTH	■	■	■	Temperature Relative humidity Absolute humidity Enthalpy Dew point	0...100% rH non-condensing	0...200°F [-20...+80°C]	4	- Outdoor temperature and humidity sensor - Optional weather shield available	
 Duct	22DTH	■	■	■	Temperature Relative humidity Absolute humidity Enthalpy Dew point	0...100% rH non-condensing	0...200°F [-20...+80°C]	4	- Duct temperature and humidity sensor	
 Condensation	22HH				■ Condensation				- Condensation sensor available with mounted probe or remote probe	

All humidity sensors include NEMA 4X/IP65 rated housings as standard




Air Quality

Application	Type Code	Output Signal			Measured Values	Measurement Range				Options	Application/Comment
		Active	Modbus RTU	BACnet MS/TP		CO ₂	Temperature	VOC 0...100%	Humidity		
	22DC	■			CO ₂	0...2000 ppm or 0...5000 ppm					Duct CO ₂
	22DTC	■			CO ₂ Temperature		32...122°F [0...50°C]				Duct CO ₂ Temperature
	22DTM	■	■	■	CO ₂ Temperature Relative humidity Absolute humidity Enthalpy Dew point	0...2000 ppm	32...122°F [0...50°C]	0...100% Non condensing	■		Duct CO ₂ rH Temperature
	22DCV	■			CO ₂ VOC	0...2000 ppm			■		Duct CO ₂ VOC
	22DCM	■			CO ₂ Temperature VOC	0...2000 ppm	32...122°F [0...50°C]		■		Duct CO ₂ VOC Temperature
	22DCK	■			CO ₂ Temperature VOC CO ₂ /VOC mix	0...2000 ppm	32...122°F [0...50°C]		■		Duct CO ₂ VOC CO ₂ /VOC Temperature





All air quality sensors include NEMA 4X/IP65 rated housings as standard

Y_10003 - 04/22 - Subject to change. © Belimo Aircontrols (USA), Inc.

Pressure Sensor Product Range

Application	Type Code	Output Signal			Measured Values	Media	Measurement Range (22ADP Factory Default Settings Shown)	Options	Application/ Comment
		Active	Modbus RTU	Switch					
 Duct	22ADP	■	■	■	Differential pressure	Air	0...1"wc [250 Pa] 0...10"wc [2500 Pa] 0...28"wc [7000 Pa]	8 ■	Differential air pressure sensor
 Switch	01APS			■	Differential pressure	Air	0.08...1.20"wc [20...300 Pa] 0.20...2.00"wc [50...500 Pa] 0.80...4.00"wc [200...1000 Pa] 2.00...10.00"wc [500...2500 Pa]		Duct air Differential pressure switch
 Pipe	22WP	■			Pressure	Air, water	0...15 psi 0...50 psi 0...100 psi 0...200 psi		Pipe water and pressure sensor
	22WDP	■			Differential pressure	Water	0...15 psid 0...30 psid 0...50 psid 0...100 psid		Pipe water differential pressure sensor


Room Sensor Product Range

Application	Type Code	Output Signal		Manual Override	Measured Values	Measurement Range					Additional Information									
		Active	Passive			Temperature	Humidity	CO ₂	NFC	No Belimo Logo										
	Room	01RT-5B-0	■	■	Temperature	32...122°F [0...50°C]						PT1000 output signal, manual override								
	01RT-5B00L-0	■	■						■											
	01RT-5L-0	■	■								NTC10k2 output signal, manual override									
	01RT-5L00L-0	■	■						■											
	01RT-5M-0	■	■								NTC10k3 output signal, manual override									
	01RT-5M00L-0	■	■						■											
	01RT-5Q-0	■	■								NTC20k output signal, manual override									
	01RT-5Q00L-0	■	■						■											
	P-01RT-5B-0	■	■	Temperature with setpoint							PT1000 output signal, manual override, setpoint adjustment dial									
	P-01RT-5B00L-0	■	■												■					
	P-01RT-5L-0	■	■													NTC10k2 output signal, manual override, setpoint adjustment dial				
	P-01RT-5L00L-0	■	■												■					
	P-01RT-5M-0	■	■													NTC10k3 output signal, manual override, setpoint adjustment dial				
	P-01RT-5M00L-0	■	■												■					
	P-01RT-5Q-0	■	■													NTC20k output signal, manual override, setpoint adjustment dial				
	P-01RT-5Q00L-0	■	■												■					
	22RT-59-1	■		Temperature							Adjustable temperature range via NFC									
	22RT-5900L-1	■													■	■				
	22RTH-59-1	■		Temperature, Relative humidity Dew point																
	22RTH-5900L-1	■														■	■			
	22RTM-59-1	■		CO ₂ Temperature, Relative humidity Dew point								Adjustable temperature and CO ₂ range via NFC								
	22RTM-5900L-1	■														■	■	■		
	EXT-RT-SS1000		■	Temperature	4...140°F [-20...+60°C]							PT1000 output signal								
	EXT-RT-SS10K2		■															NTC10k2 output signal		
	EXT-RT-SS10K3		■																NTC10k3 output signal	
	EXT-RT-SS20K		■																	NTC20k output signal
	EXT-TN-1066869	■											Occupancy (motion) Temperature	32...122°F [0...50°C]						
EXT-TN-1071511	■		Light	-22...+158°F [-30...+70°C]																

Y_10003 - 04/22 - Subject to change. © Belimo Aircontrols (USA), Inc.

Gas Monitoring Device Product Range


Vehicle Emissions

Application	Type Code	Output Signal				Measuring Range			Communication	
		Active	1 SPDT Relay	2 SPDT Relays	2 Analog Outputs 4...20 mA or 2...10 V	Carbon Monoxide	Nitrogen Dioxide	Measuring Range	CAN bus	BACnet MS/TP
 Vehicle Emissions	EXT-OP-6002-250-A	■	■		■		0...250 ppm	■	■	
	EXT-OP-6002-250-B	■		■				■	■	
	EXT-OP-6002-250-C	■						■		
	EXT-OP-6014-A	■	■		■		■	0...10 ppm	■	■
	EXT-OP-6014-B	■		■			■		■	■
	EXT-OP-6014-C	■					■		■	
	EXT-6002-250-14-A	■	■		■	■	■	0...250 ppm CO 0...10 ppm NO ₂	■	■
	EXT-6002-250-14-B	■		■		■	■		■	■
	EXT-6002-250-14-C	■				■	■		■	

Additional accessories are available, i.e. communication module, replacement sensors, calibration bottles, and more.

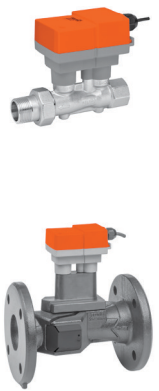
Gas Monitoring Device Product Range

Indoor Air Quality

Application	Type Code	Output Signal				Measuring Range			Communication	
		Active	1 SPDT Relay	2 SPDT Relays	2 Analog Outputs 4...20 mA or 2...10 V	Carbon Dioxide	Relative Humidity	Measuring Range	CAN bus	BACnet MS/TP
 Indoor Air Quality	EXT-OP-6015-2000-A	■	■		■		0...2000 ppm	■	■	
	EXT-OP-6015-2000-B	■		■	■			■	■	
	EXT-OP-6015-5000-A	■	■		■		0...5000 ppm	■	■	
	EXT-OP-6015-5000-B	■		■				■	■	
	EXT-OP-6015-10000C	■					0...10000 ppm	■		
	EXT-OP-6015-10000B	■		■				■	■	
	EXT-OP-6025-B	■		■				■	■	


Additional accessories are available, i.e. communication module, replacement sensors, calibration bottles, and more.

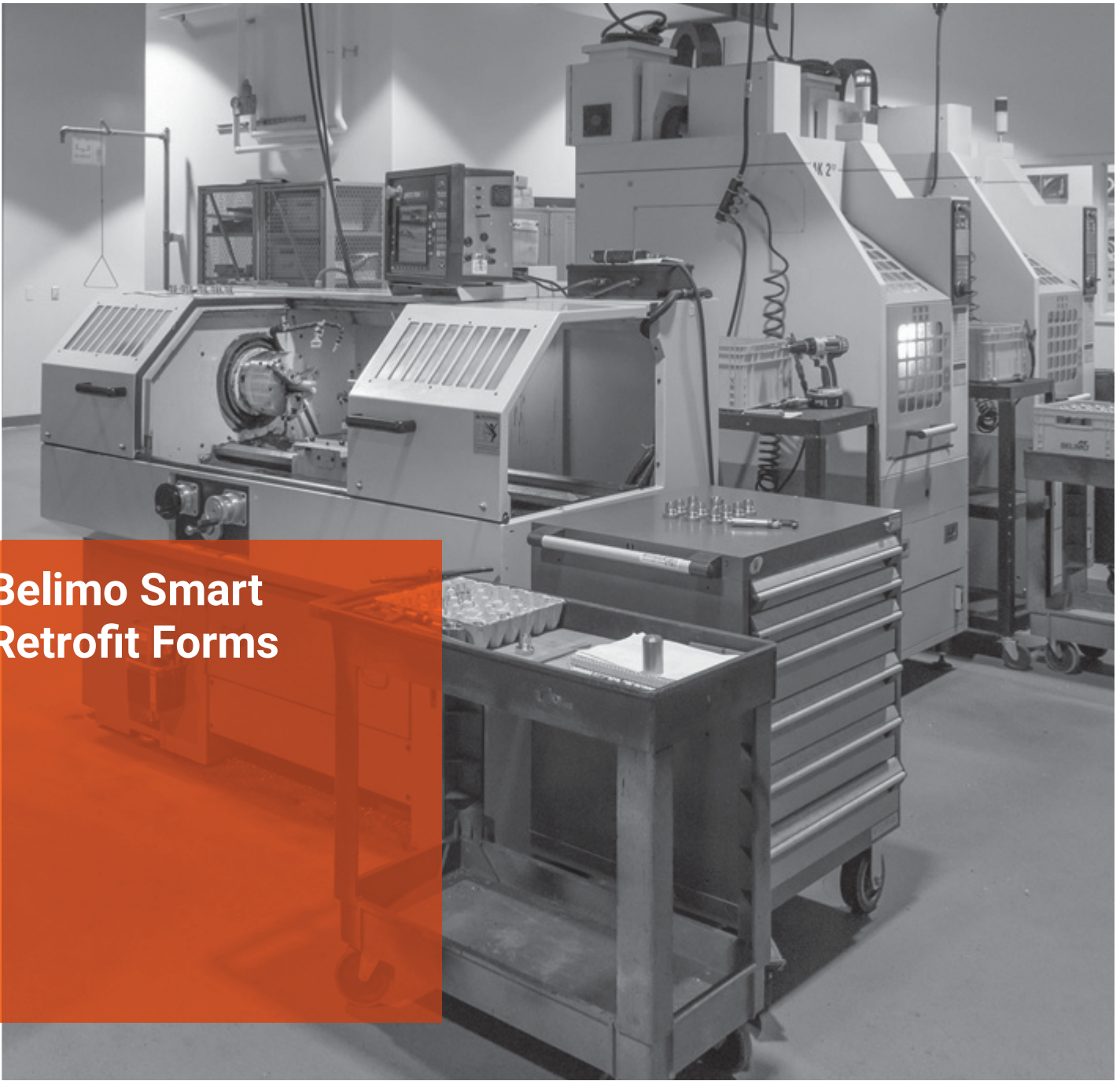
Flow Sensor Product Range

Application	Type Code	Output Signal	Measured Values	Media	Pipe Size	Body Pressure Rating			Measurement Range
		Analog (0...10 VDC)	Flow	Water/Glycol (<60%)	Inches [mm]	360 psi	ANSI 125	ANSI 250	Max. GPM
	FM050	■	■	■	½" [15]	■			6.6
	FM075	■	■	■	¾" [20]	■			12.4
	FM100	■	■	■	1" [25]	■			21.8
	FM125	■	■	■	1¼" [32]	■			34.2
	FM150	■	■	■	1½" [40]	■			47.5
	FM200	■	■	■	2" [50]	■			91.2
	FM250	■	■	■	2½" [65]		■		152
	FM250-250	■	■	■	2½" [65]			■	152
	FM300	■	■	■	3" [80]		■		215
	FM300-250	■	■	■	3" [80]			■	215
	FM400	■	■	■	4" [100]		■		380
	FM400-250	■	■	■	4" [100]			■	380
	FM500	■	■	■	5" [125]		■		594
	FM500-250	■	■	■	5" [125]			■	594
	FM600	■	■	■	6" [150]		■		855
	FM600-250	■	■	■	6" [150]			■	855

NOTE: V_{nom} accounts for 20% overflow (120% flow is the max output reading at 10 V).

Thermal Energy Meter Product Range

Application	Type Code	Output Signal	Measured Values	Media	Pipe Size	Body Pressure Rating	Measurement Range		
		Analog (0...10 V) (0.5...10 V) (2...10 V)	Flow & Thermal Energy					Degree of Protection	Water/Glycol (<60%)
	Pipe	22PE-5UC	■	■	NEMA 2 IP54	■	½" [15]	■	6.6
	22PE-5UD	■	■	■		¾" [20]	■	11.0	
	22PE-5UE	■	■	■		1" [25]	■	15.4	
	22PE-5UF	■	■	■		1¼" [32]	■	26.4	
	22PE-5UG	■	■	■		1½" [40]	■	44.0	
	22PE-5UH	■	■	■		2" [50]	■	66.0	
	22PE-5UHH	■	■	■		2" [50]	■	100	
	22PE-5XUCN	■	■	NEMA 4	■	½" [15]	■	6.6	
	22PE-5XUDN	■	■		■	¾" [20]	■	11.0	
	22PE-5XUEN	■	■		■	1" [25]	■	15.4	
	22PE-5XUFN	■	■		■	1¼" [32]	■	26.4	
	22PE-5XUGN	■	■		■	1½" [40]	■	44.0	
	22PE-5XUHN	■	■		■	2" [50]	■	66.0	
	22PE-5XUHK	■	■		■	2" [50]	■	100	

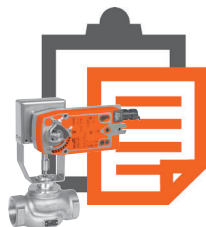


Belimo Smart Retrofit Forms

Upgrade HVAC Systems Easily

Over the decades, Belimo has continued to innovate and create customized retrofit solutions for actuators, valves, and sensors that increase performance, efficiency, and reliability with fast delivery backed with a 5-year warranty. When a standard, off-the-shelf retrofit solution is not quite right for our customer needs, our Retrofit team designs a custom solution. Our Retrofit Team and dedicated onsite machine shop will fabricate a solution with only having a completed Smart Retrofit Form.

If you can dream it, Belimo can build it.



Exceptional service

For over 40 years, Belimo has successfully focused on the heating, ventilation, and air conditioning markets providing quality solutions that will increase energy efficiency and reduce installation costs with the fastest delivery times in the industry. Our innovative products have always been designed to help achieve objectives better, faster, and more economically. Investing in new technology is key to our success, and Belimo will continue to offer products to help businesses succeed.



2-year warranty



5-year warranty



Global support



Tested quality



On-time delivery



Extensive service



Complete product range

Belimo Americas

USA, Latin America, and the Caribbean: www.belimo.us

Canada: www.belimo.ca

Brazil: www.belimo.com.br

Belimo Worldwide: www.belimo.com

**BELIMO**[®]